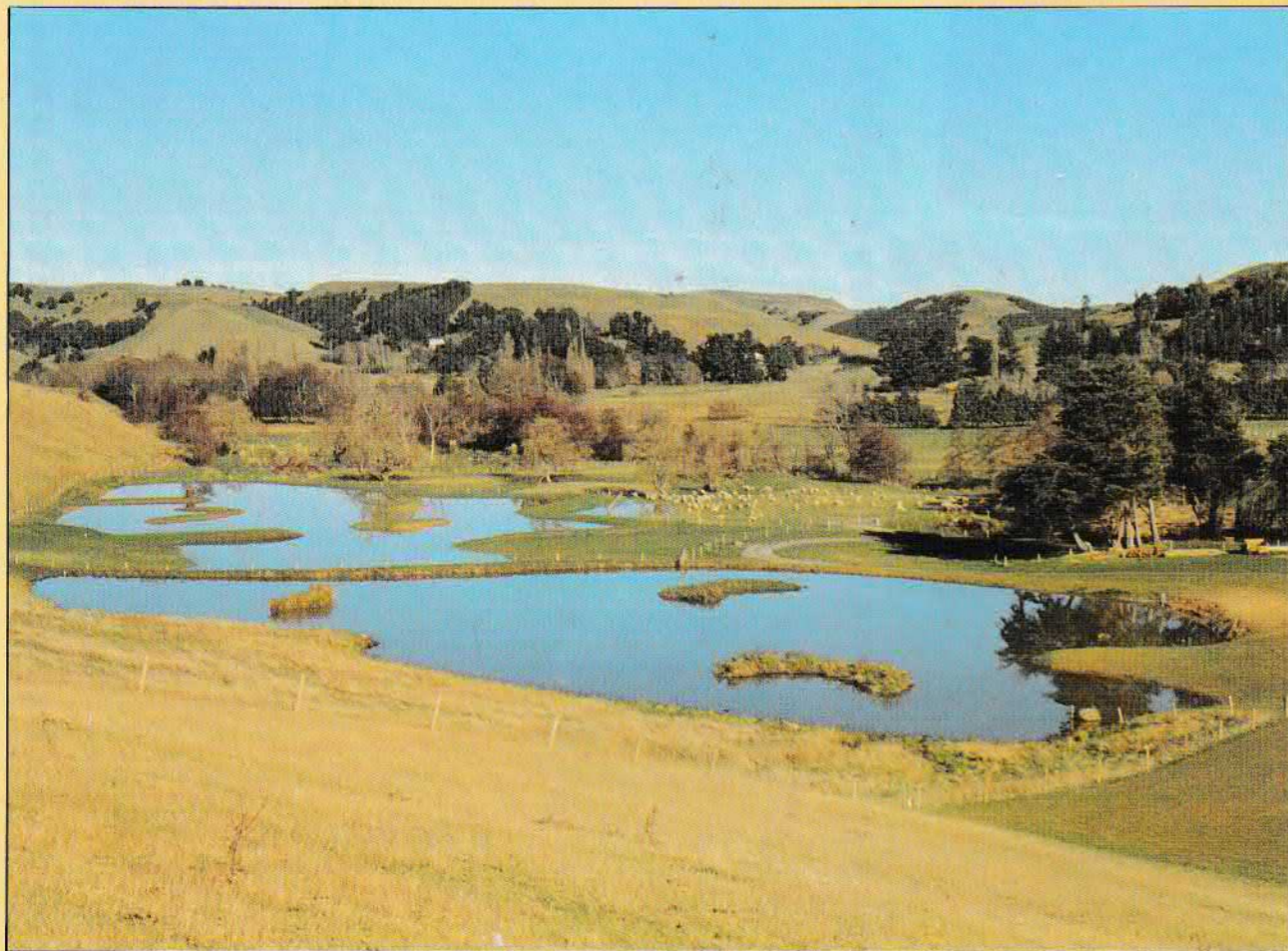


Winchester

NEW ZEALAND LTD

*is proud to support Ducks Unlimited New Zealand Inc.
in their efforts to propagate and preserve
New Zealand's rare waterfowl.*



Wetland creation at Ted and Glenys Hansen's Wairarapa property.



WINCHESTER

MORE THAN A NAME. A LEGEND.

Distributed in New Zealand By: Winchester New Zealand

JULY 1994
ISSUE 80

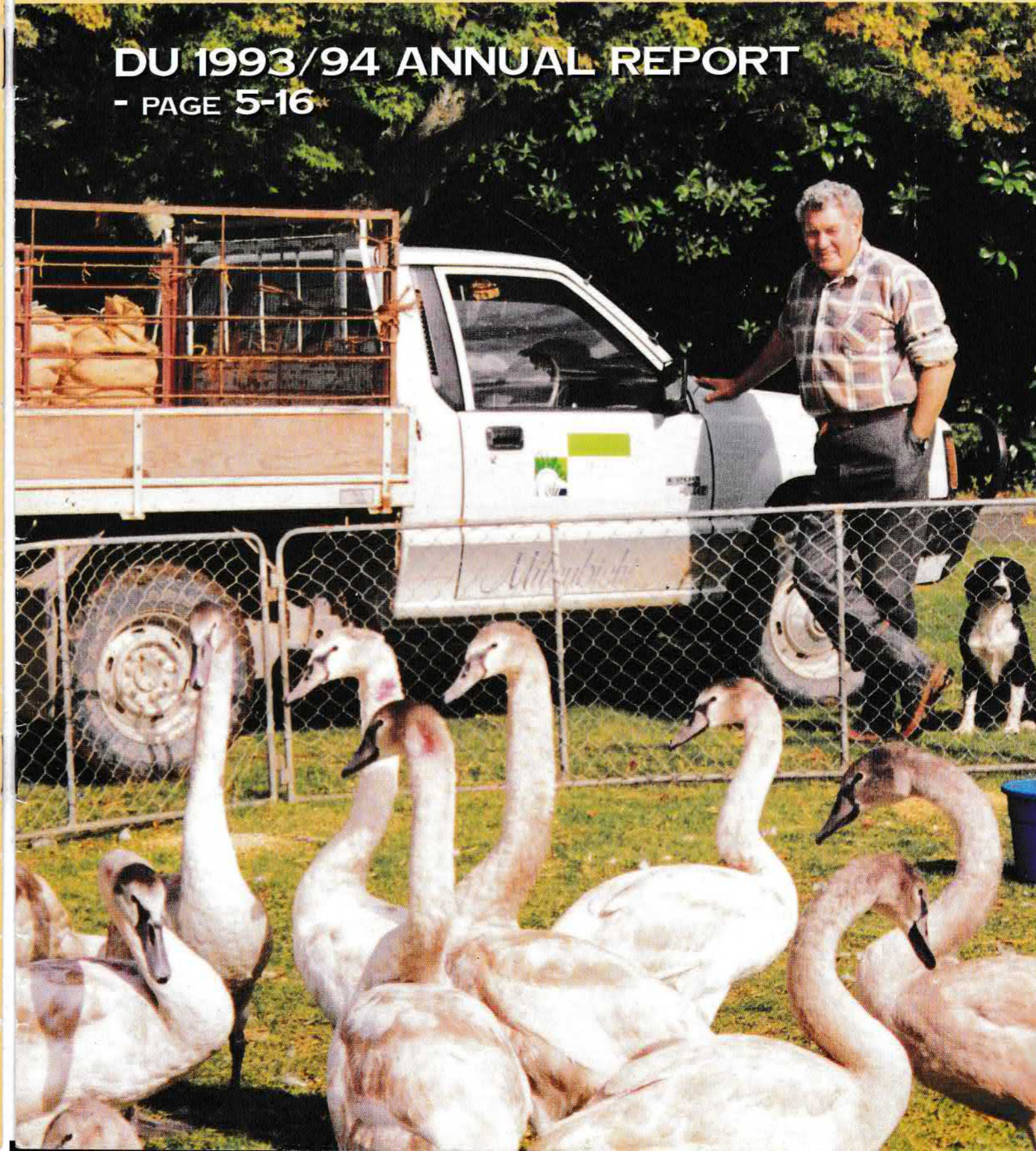
FLIGHT



DUCKS UNLIMITED NEW ZEALAND INC. in association with Ducks Unlimited Canada, USA, Australia and Mexico

DU 1993/94 ANNUAL REPORT

- PAGE 5-16



DUCKS UNLIMITED NEW ZEALAND INC.,

PO BOX 9795 AUCKLAND, NEW ZEALAND

OUR MISSION

We are a voluntary membership based society dedicated to the conservation of New Zealand wetlands through:

- wetland restoration and development
- breeding programmes for threatened waterfowl
- advocacy and education of wetland values

By these means we seek to ensure the ethical and sustainable use of wetland resources by all existing and future users.

BOARD OF DIRECTORS

CO-PATRONS:	Lady Isaac, QSM, Christchurch, Norman Marsh, Reporoa
PRESIDENT:	David Smith, LIB, Auckland - (<i>"Whio" Supervisor - Blue Duck</i>) - Night 0-9-292 8873
CHAIRMAN:	David Rice, LIB, Auckland - (<i>"Gretel Supervisor" - Grey Teal</i>) - Day 0-9-299 8330
VICE PRESIDENT:	Alan Wilks, Greytown - (<i>"Pateke" Supervisor Brown Teal, Pearce Wetlands Supervisor</i>) - Night 0-6-304 9729
EXECUTIVE DIRECTOR:	Dr Grant Dumbell, Ph.D, Auckland - Day 0-9-625 9002
SECRETARY:	Graham Gurr, Auckland - (<i>Art Committee, National Raffle</i>) - Night 0-9-489 5337
TREASURER:	Glenys Hansen, Eketahuna - Night 0-6-375 8474 Diane Pritt, Ohakune - (<i>National Sales, Conference Organiser</i>) Ken Cook, Palmerston North - (<i>National Shoot Co-ord, Wetlands Supervisor</i>) Jim Campbell, Masterton Dave Johnston, Reporoa - (<i>"Royal Swan" Supervisor - Mute Swan</i>) Ian Lyver, ACA, Hastings Carolyn Hooson, Wellington - (<i>Flight Editor</i>) William Abel, Wellington

SINCLAIR WETLANDS MANAGER: Horrie Sinclair, MBE, Outram
CONSERVATION ADVISOR: Professor John Craig, Ph.D, Auckland
FLIGHT PRINTER: Brendan Coe, Lithographic Services Limited, Wellington

HONORARY MEMBERS

Keith Barnett, Tokaanu	Bill Wilkinson, Wellington	Ralph Adams, Blenheim	Laurie Piper, Christchurch
Horrie Sinclair, MBE, Outram	Adrienne Longuet, Wellington	Lady Isaac QSM, Christchurch	Stephen Loach, Dunedin
		Tony Flexman, Pokeno	Sir Peter Elworthy, Timaru

NEW ZEALAND LIFE MEMBERS

Norman Cameron, Carterton	Mrs M. Davison, Wyndham	Kerry Butler, Waipawa	Dave Robinson, Rotorua
Ian Pirani, Katikati	Glenys Hansen, Eketahuna	Alastair Nicholson, Wellington	Equine Nursery, Te Puke
Mr J. H. D. Ward, Huntly	Brent McDonald, Outram	Mr T. G. L. Pearce, Wairarapa	Otamaire Trust, Hunterville
Michael Bourke, Kimbolton	Chris Hooson, Wellington	Mr S. B. L. Pearce, Wairarapa	Craig Worth, Hamilton
Isaac Wildlife Trust, Christchurch	Leigh McKinnon, Katikati	Mr B. M. L. Pearce, Wairarapa	Ame Nielson, Masterton
Fred Bailey, Auckland	Alan Fielding, Palmerston North	Dave Johnston, Reporoa	Mathew Paku, Masterton
Norman Marsh, Reporoa	Peter McLeod, Christchurch	Mrs L. Tapp, Northland	Graham Henry, Wellington
Jim Campbell, Masterton	Euan Bidwell, Taupo	Mr M. Tapp, Northland	Mr H. Honegger, Otaki
Cheryl Pirani, Auckland	Andre Terpstra, Murupara	Colleen Hansen, Eketahuna	Brent Fotheringham, Wellington
Michael Hucks, Taupo	Mrs Dulcie Barnett, Tokaanu	Miss O.D. Pearce, Wairarapa	David Mitchell, Christchurch
Myles White, Dunedin	Les Cleveland, Dunedin	Craig Ewing, Carterton	Dawn Pirani, Katikati
Andy Gurney, Featherston	Ross Meads, Turangi	Mark Pearce, Wairarapa	Don McCulloch, Wellington
Mark Grace, Hunterville	Mark Newcomb, Auckland	Marie McEntee, Auckland	John Sax, Auckland
			Alan Gibbs, Auckland

INTERNATIONAL LIFE MEMBERS

William Barrett, Australia	Richard Trethewey, Canada	Eugene Engrav, USA	Edwin Roberts Jnr., USA
Tony Reiger, USA	Robert Eberhardt, USA	Basil George, Wales	Robert Strahs, USA
Ken Lowry, Australia	Tom Arvin, USA	James Hulbert, USA	Charles Thomas, USA
William D. Wright, USA	Elton Ball, NSW Australia	Garth Jackson, Canada	John Walker, USA
Mr & Mrs Pat Nolan, USA	Mr K. Ball, Papua New Guinea	Donald Kaatz, USA	Ebe Walter, USA
Hazard Campbell, USA	Mrs K. Ball, Papua New Guinea	Bud Kapilla, USA	Tom Williams, USA
Duncan Sinclair, Canada	John Belz, USA	Marc Karnes, USA	Stephen Lund, USA
Mrs Gina Campbell, USA	Beatty Burke, USA	James Konkol, USA	Don & Barb Rollins, USA
Herb Moulding, Canada	Robert Corrigan Jnr., USA	Omer Long, USA	Robert Middleton, USA
Paul Roman, USA	Bill de Journett, USA	Jean Luxford, USA	Duncan Campbell, Canada
Barry Morrison, Canada	Mr & Mrs William Dean, USA	Mr & Mrs Nugent, USA	Tom Pearman, USA
Mrs Pat Hall, USA	John Egger, USA	John Pittenger, USA	Gary Harrigan, USA
Mr & Mrs Clark Springer, USA	Robert Ehrlich, USA	Peter Pund, USA	Al Cromb, Canada
		Sis & Ward Reilly, USA	Keri Cromb, Canada

COVER PHOTO: Dave Johnston, Supervisor - Royal Swan, with charges

PRESIDENT'S REPORT

David Smith, President

By the time you receive this copy of Flight we will be within two weeks of our twentieth A.G.M. We have received registrations from a number of people who have been active in Ducks Unlimited in the past who wish to join in our celebrations. This is a fine opportunity for all to catch up with old friends, and with DU in the 1990s. We have the Executive Vice President of DU Canada joining us and at least two Australian directors.

If you have not registered by now give it serious consideration now as time is running out.

Chris Hooson has retired from the Board and our thanks must go to Chris for his eight years service both on the Board and with the Wellington Chapter. Carolyn Hooson, has accepted a position on the Board as the Editor of 'Flight' magazine, and has already initiated the new design of

'Flight'. Also joining us is William Abel, Area Chairman for the Wellington Chapter. We are pleased to have both Carolyn and William with us and look forward to their contributions.

It is with pleasure I advise that, following the comments that I made in the April Flight, the Board has approved a new project in the Wairarapa and we are presently awaiting final costings for a project in the Wellington region.

Fuller details of these will appear in Flight at a later stage.

I would also like to congratulate the Department of Conservation for completing the repair of the sill for Lake Whangape. As those of you who live in the northern

regions will be aware the sill for the outlet of the Lake was illegally lowered. The irony was that a resource consent may have been required to restore it even though the initial action was contrary to the Act in itself.

I visited the Lake the other day with Jim Campbell and was very pleased to see that it was nearly back to its usual level.

There was a large number of swan to be seen and I have heard from others that there has been rafts of many ducks sitting in the Lake once again.

It is important that Ducks Unlimited assist the Department and other statutory bodies in respect of future restorative works as the results are for the benefit of Wetlands throughout the country.

I look forward to seeing you at the A.G.M.

GRANT DUMBELL, Ph.D



Grant has been a member of Ducks Unlimited for nine years, and a committee member of the Auckland Chapter for three years. He is the Executive Director of Ducks Unlimited, the only full time role in DU, a position he has held for six years.

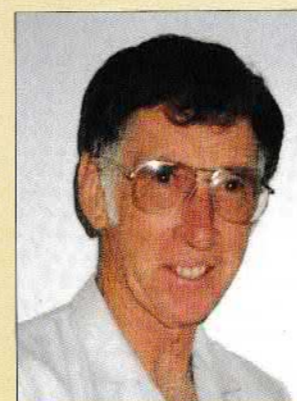
Grant has an impressive list of credentials which he started gathering after leaving his home town of New Plymouth to attend Victoria University in Wellington.

He holds a first class BSc. Hons degree in zoology from Victoria, and a Ph.D degree in zoology from Auckland University. He has specialised in the ecology of rare species and habitats. During his university career he also managed to spend 14 months in England and Europe.

Grant has worked for the NZ Wildlife Service on Maud Island in the Marlborough Sounds and on Farewell Spit, Codfish Island and Stewart Island (with the Kakapo). He has also worked for DSIR Ecology Division, and with the Department of Conservation assessing Brown Teal habitat in Northland and on Great Barrier Island.

Grant and his wife Marie live in Auckland and in his spare time (precious little) he enjoys birdwatching, travelling, troutfishing and all aspects of conservation.

KEN COOK



Ken has been a member of DU for ten years, a director for three and has always been an active chapter member.

He has spent many years on the Councils of both the Wellington Acclimatisation Society and the NZ Clay Target Association and is a life member of the Rifle, Rod and Gun Club in Manawatu.

Ken is a retired builder and has spent all his working life in and around Palmerston North. He grew up about a kilometre from the Makerua Swamp site, a recent DU project. Ken and his wife Jan have eight children and 12 grandchildren. When they are not surrounded by family, Ken likes to run his small herd of cows and calves.



Catch one of our
frequent flights
to Canada.

Proudly supporting Ducks Unlimited New Zealand

Canadian
Canadian Airlines International

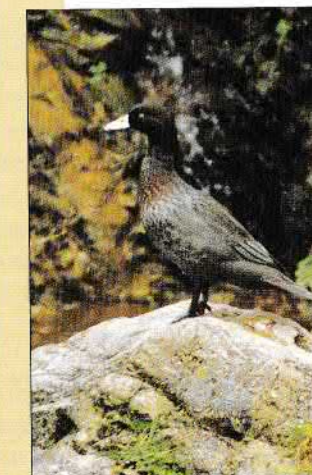
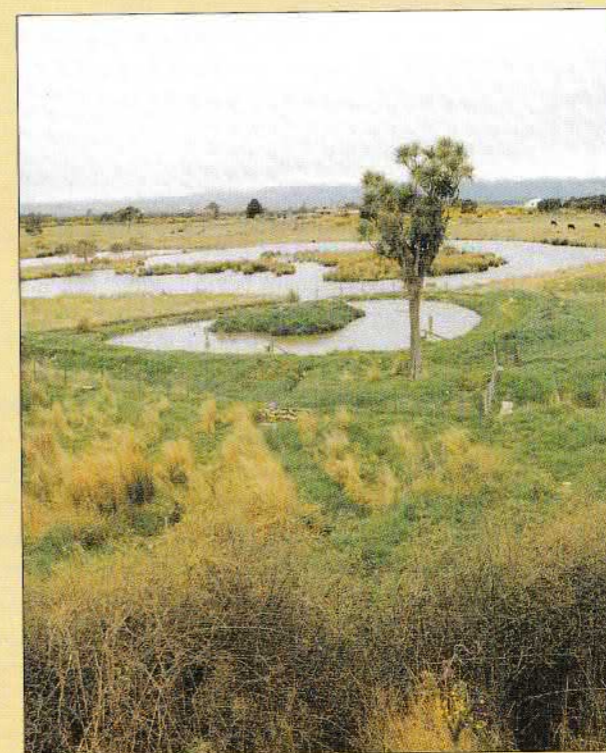
For reservations or more information please phone 309 0735, outside Auckland FREEPHONE 0800 802 245.

CAI 12003

1993/94 ANNUAL REPORT



**DUCKS UNLIMITED
NEW ZEALAND INC.**



DUCKS UNLIMITED

PRESIDENT'S ANNUAL REPORT

It is with pleasure that I present my report for the 1993/94 year. I believe that a great sense of optimism concerning the affairs of our organisation is held by your Board.

FINANCE

Much of this has to do with changes in the Board's approach to our financial situation and in particular the setting of budgets each year with a firm resolve to keep within the confines of those budgets. The net result has been that your Treasurer will report a substantial financial surplus of income over expenditure. Over the last two years the Board has also addressed the question of all liabilities faced by the organisation. These have been formalised in the revolving credit arrangement with BNZ Finance Ltd. Much of our organisation's financial efforts have been expended in recent times in meeting financial obligations incurred as a result of the acquisition of the Sinclair and Pearce Wetlands. This has tended to restrict the availability of funds for other projects. Your Board believes that the organisation has now reached the stage where we can actively look for other projects which are in accordance with our aims.

MEMBERSHIP

For some time the Board has been concerned with membership and has been

David Rice

actively addressing this particular problem. I am pleased to be able to advise that for the first time in a number of years there has been an increase in membership. The Board currently has before it further proposals to ensure that we not only maintain the current membership level but work to increase it.

SPONSORSHIP

The last year has seen a substantial amount of funds received through sponsorship. I must particularly express our gratitude to Marathon Apparel and the Broadlands Wildfowl Trust. Other organisations who continue to actively support us include Dow Elanco; Canadian Airlines; Brendan Coe and Lithographic Services Ltd; Ansett New Zealand and the Queen Elizabeth II Trust. In addition, thanks are due to the Department of Conservation and the Ministry of the Environment for specific project funding.

DIRECTORS

During the year both Howard Egan and Chris Hooson retired from the Board. Both were valued members of the Board and I express the Board's thanks to them and their partners for the work and effort they have put in over the years. Both Howard and

Chris have indicated they will continue their interests in our organisation and I am happy to report the appointment of both Carolyn Hooson and William Abel as new Board members. Chris has been our Secretary over recent months and I wish to confirm the appointment of Graham Gurr as his successor to this position.

Jim Campbell, for the first time in a number of years does not hold the position of either President or Chairperson of the Board. He has seen put in place a system whereby a Board member is appointed Vice-President, then President then Chairperson, each for a term of two years. On behalf of Ducks Unlimited I record our thanks to Jim for his time and effort and also to his wife Raana for actively giving her support to his long term service as an officer of the organisation.

I also wish to advise that, as my two year term as President has ended, David Smith has been appointed President and Alan Wilks Vice-President. I will continue in the position of Chairperson.

In closing I would like to thank all those persons who have assisted me in my position as President over the last two years and in particular our Executive Director Dr Grant Dumbell and my wife Trina.

EXECUTIVE DIRECTORS ANNUAL REPORT

The past year has seen Ducks Unlimited shift from a climate of consolidation to one of cautious expansion. If we are able to believe what we read in the media then the near future bodes well for this expansion to continue. In this report I would like to briefly review some of the past year's highlights before discussing the basis of our plans for the future.

MEMBERSHIP

For the first time in a number of years we have been able to record a net increase in our membership. This has come about through a concerted effort to recruit new members right throughout the year. It

Dr Grant Dumbell

began with the distribution of our new full colour membership information pamphlet, which was produced with the assistance of DowElanco (NZ) Ltd, and continued with the membership competition which we ran, in conjunction with Rod and Rifle Magazine, through the first half of the year. We are most grateful for the assistance that both of these sponsors have been able to give us. During the year we also completed the distribution of our new Life Member lapel pins. These pins have been designed according to the standards set by Ducks Unlimited in North America and are an

important recognition of the outstanding support that our Life Members have given to us.

SIGNIFICANT DONATIONS

The past year also saw Ducks Unlimited receive one of its largest cash donations. Marathon Apparel is a significant supporter of Ducks Unlimited in the United States and following a visit to New Zealand by Mr Tom Jernigan we were extremely fortunate to receive a donation of US\$20,000. This has now been steered into our Pearce Wetlands project. We are endeavouring to further develop our relationship with Marathon Apparel in order that we, in conjunction with Ducks Unlimited Australia, may provide mutually beneficial opportunities for

Marathon throughout Australasia. We are most appreciative of Marathon's generous support.

FINANCE/FUNDRAISING

On the financial front, we have had a particularly successful year and have recorded our largest surplus for some time. Our increased revenue was helped not only by having a larger number of members, but also by the GST exemption that we received for our subscriptions from the Inland Revenue Department. This exemption is currently worth over \$3,000 per year. Our conservation donations also showed a significant improvement due to the receipt of specific grants for our Blue Duck, Brown Teal and Grey Teal projects. Chapter fundraising was also significantly higher and indicates the dedication which the Chapter committees bring to Ducks Unlimited's conservation goals. We are particularly grateful for the ongoing support for our auctions which we receive from Ducks Unlimited Canada and Ducks Unlimited Inc. Without access to the DU Canada Contributor Services programme and the continuing support of Canadian Airlines, who generously sponsor the transport of the goods to New Zealand, our dinners would not be as successful as they are.

During the year, the Directors also approved and implemented the complete refinancing of the organisation. This has been achieved with the assistance of BNZ Finance who arranged a revolving credit facility. This has allowed us to combine all our credit lines into one flexible package which reduces the average rate of interest

which we face while allowing us to use our seasonal cashflow to further minimise our total interest bill. This facility has allowed us to meet all of our outstanding development commitments at the Sinclair Wetlands and will result in future savings which were not available with our previous arrangements. Throughout the year we were also able to make considerable savings on travel with the continuation of our Ansett sponsorship which provides discounted airfares throughout the country. We are very grateful for Ansett's continuing support.

Following on from the introduction of our new logo throughout all of our operations we have recently been able to proceed with the redesign of our "Flight" magazine. "Flight" is not only our main channel of communications with members, it is also the major public face of our organisation and it is important that we are able to achieve the highest possible standard. To further enhance the flow of information onto members we are now also introducing a clearly identifiable Annual Report as part of "Flight". This is designed to give an overview of the status of the organisation along with the review of the past year to allow members to easily stay abreast of progress and developments.

To help guide our development, the Directors are currently formulating a 10 year long range plan for the organisation. This plan is being developed along the same lines as they very successful strategic objectives which Ducks Unlimited Canada

implemented when they began fundraising in earnest in the early 1980's.

The basis of the plan is to pick a comparable DU province or state and using their performance as a benchmark against which your own progress can be measured. In the case of DU Canada they chose DU California, given the comparable population base, and in a little over 10 years they are almost twice as large as California.

Accordingly, DU New Zealand is being compared to DU British Columbia as we are both of similar size with similar populations and similar geography. Obviously a comparison with one of the prairie provinces would have been quite misleading. This comparison has identified a range of objectives which we will strive to meet in both four year and ten year timeframes including the number of wetland projects to be undertaken, the number of members we will recruit, our rate of annual membership turnover, the size of our liabilities, the proportion of income which is spent on conservation versus administration, and the number of chapter committees we will form. It is now a priority to encapsulate these objectives into a published written plan to enable them to be communicated as widely as possible as their achievement will require a concerted effort to bring them to fruition, the kind of effort which has allowed us to complete our consolidation and to think about a more expansive future for Ducks Unlimited as we complete our first 20 years of conservation and strike out on the road to our 30th anniversary.

TREASURERS ANNUAL REPORT

I am pleased to be able to report that 1993/94 was, from a financial point of view, Ducks Unlimited's most successful year for several years. At the close of the year we had achieved a financial surplus of over \$25,200, slightly more than three times the \$8,300 surplus we recorded in the previous year. This surplus was generated by a \$14,700 increase in revenue and a \$7,400 decrease in expenditure. This decrease in expenditure was largely offset by a \$5,600 increase in the operating deficit recorded by the Sinclair Wetlands.

On the revenue side, we achieved higher receipts for membership, donations and fundraising, and conservation

Glenys Hansen

donations. Other income was lower than last year because of the large GST refund we received last year. The main features of the Revenue Account include substantially higher income from Chapter fundraising and increased income for most of our conservation projects as a result of a number of successful grant applications throughout the year. On the expenditure side we significantly reduced our administration expenses while our membership servicing costs increased due to the implementation of our new Life Membership lapel pins. Our total

conservation project expenses also decreased because we did not undertake a large wetland project as we did in the previous year, however this does not indicate that some projects were curtailed.

Our Balance Sheet now records a record asset value of over \$545,000 and while the total liabilities faced by the organisation have increased slightly, the mix of liabilities has changed markedly. This has largely been due to the financial restructuring undertaken during the past year which has seen a number of our financial obligations completed and our debt funding reorganised into a revolving credit facility with BNZ Finance. This facility has allowed us to take maximum advantage of lowered

TREASURERS ANNUAL REPORT - CONTINUED

interest rates while utilising our seasonal cashflow to best advantage. The year has also seen Accumulated Funds jump by \$38,300, or 10%, to stand at more than

\$386,000.

The auditor for the year has again been Brian Bourke of Eastwood Bourke in Masterton. Finally I would like to record my

appreciation to Richardson Epplett of Hastings for their assistance and help throughout the year. Glenys Hansen Treasurer

OPERATION PATEKE

Alan Wilks Project Supervisor

I am pleased to report another successful year for the Brown Teal captive breeding programme with approximately 100 birds raised from the 34 pairs held in captivity. A total of 17 breeders now hold breeding birds and there are a further three breeders holding non-breeding birds.

However, the past twelve months have been quite difficult for "Operation Pateke", but we are confident that the final outcome will eventually be positive for the conservation of Brown Teal. The main difficulty has centred on the realisation by the Department of Conservation that the captive management of Brown Teal and the field management of the wild populations and their habitats has become unbalanced. While the development of the captive management programme has progressed to the point where Brown Teal are able to be bred in captivity in large numbers with relative ease, the management and development of habitat into which these birds can be released has made little progress.

While Ducks Unlimited had hoped that the drafting of the Brown Teal recovery plan would help to correct this imbalance, 1993 saw very little progress with the recovery plan until late in the year. This was further

compounded by a departmental decision that mainland releases of Brown Teal should halt. This decision was taken without any consultation and at a time when Ducks Unlimited was holding a large number of birds for release, along with a release permit. A resolution was not found until Ducks Unlimited consulted the Minister of Conservation.

Following a field habitat survey at the beginning of 1993 Ducks Unlimited proposed to move the release of Brown Teal away from artificial freshwater lagoons in a highly modified agricultural environment and into less modified estuarine habitats. The site proposed for releases was the upper reaches of the Hokianga Harbour on Northland's west coast. The first release of 54 birds at this site was eventually completed in October 1993 after final clearance was given by the Department. As yet there is no information about the success or failure of this release except that a sighting of a good number of birds was made at the release site some months after the release. It is our intention to seek approval for a further release of birds at this site from the birds currently being held for release. In addition to this mainland release site Ducks Unlimited is also advocating the continued use of islands as release sites. To this end we are progressing with the drafting of a list of

potentially suitable islands.

Ducks Unlimited has also proposed a major shift in emphasis for the management of the captive breeding stock of Brown Teal. This involves a concentration on the production of a smaller quantity of known quality birds as opposed to the production of a larger quantity of unknown quality birds. To make this shift the number of pairs held in captivity has been allowed to reduce through natural attrition while at the same time we have begun an intensive information gathering exercise about those birds which are still in captivity. The objective of this exercise is to be able to manage all the birds in captivity as one population where each pair is known to be an outcrossed pair producing birds of known parentage.

During 1993 we gained a complete picture of the national holdings of Brown Teal and we are now progressing with the accurate identification of each bird in the programme. Once this is completed some selective movement of birds will be undertaken to create wild-wild pairings. Breeders will also be supplied with pairs of birds of known parentage so our long term goal of implementing a full and complete studbook for the captive management of Brown Teal will be achieved. I hope to be able to report at next year's meeting that this has been achieved.

PEARCE WETLANDS

Alan Wilks, Pearce Wetlands Co-ordinator

When Ducks Unlimited purchased this property in September 1988 the western boundary of the property was well out into the lake. Today, our boundary is not as close to the waters edge due to the combination of continuing shore-line accretion and lake level fluctuations. However, the outstanding value of the shoreline for the wide range of waterfowl

and waders which use the area has not been diminished, merely moved to the west. The waterfowl feeding habitat values of the Pearce Wetlands have been maintained as a result of the careful grazing regime applied by Mark Pearce and in general, the wetland is in good shape.

During the past year only seventeen members have enjoyed the use of the Pearce Wetlands for recreational purposes. In November last year Ducks Unlimited

made an inspection of the shoreline accretion and a series of photographs were taken for future reference. Dr Hugh Robertson of the Ornithological Society has conducted monthly bird counts on the lake edge for the last nine years and his results suggest that the grazing regime applied to the Pearce Wetlands is minimising the impact of accretion. It is proposed to keep an annual watch on the progress of this accretion.

ANNUAL ACCOUNTS

DUCKS UNLIMITED (N.Z.) INCORPORATED BALANCE SHEET AS AT 31 MARCH 1994

LAST YEAR	LIABILITIES	
	TERM LIABILITIES	
	Note 1	36000
36000	H A Sinclair	
27300	N.Z. Waterfowl and Wetlands Trust	47000
46462	The Rural Bank Ltd	70000
-	BNZ Finance Limited	1700
1900	Duck Bonds	-
15000	Operation Wetlands Commitment	-
126662		154700
	CURRENT LIABILITIES	196
-	Accounts Payable	-
10431	Westpac Banking Corporation Eketahuna Branch Prepayments	3893
13037	Note 2	4089
23468		158789
150130	TOTAL LIABILITIES	
	ACCUMULATED CAPITAL AND RESERVES	
348365	ACCUMULATED FUNDS	386864
	Note 3	
		5545653
498495		

HASTINGS
18 May 1994

STATEMENT NO. 1

LAST YEAR	ASSETS	
	FIXED ASSETS	
	Statement No. 7	340372
333984	Sinclair Wetlands	110000
110000	Pearce Wetlands	-
1246	Fax Machine	1524
2006	Allcraft Punt	-
447236		451896
	CURRENT ASSETS	
71	Accounts Receivable	-
20650	G S T Refund Due	5518
9905	Goods for Re-Sale on Hand	9369
3051	Office Supplies on Hand	1830
-	Westpac Banking Corp Ltd Eketahuna Branch	4146
4	Newmarket Branch	119
17578	National Bank of NZ Ltd Mosgiel Branch	72725
51259		93757
498495		5545653

D G SMITH
PRESIDENT

G H HANSEN
TREASURER

These Accounts must be read subject to the Accountants' Statement which appears in the Notes to the Accounts.

ANNUAL ACCOUNTS

DUCKS UNLIMITED (N.Z.) INCORPORATED
INCOME AND EXPENDITURE ACCOUNT
FOR THE YEAR ENDED 31 MARCH 1994

STATEMENT NO. 2

LAST YEAR		
118493	Total Revenues Received for year Statement No. 3	133247
11781	LESS: Net Deficit for year from The Sinclair Wetlands Project Statement No. 5	17403
106712		115844
97753	LESS: Expenses Cash Expenditure Statement No. 4	90312
651	Depreciation Statement No. 7	233
98404		90545
8308	EXCESS OF INCOME OVER EXPENDITURE FOR YEAR TRANSFERRED TO ACCUMULATED FUNDS	\$ 25299

These Accounts must be read subject to the Accountants' Statement which appears in the Notes to the Accounts.

DUCKS UNLIMITED (N.Z.) INCORPORATED
REVENUE ACCOUNT
FOR THE YEAR ENDED 31 MARCH 1994

STATEMENT NO. 3

LAST YEAR		
18243	MEMBERSHIP Subscriptions	16850
283	Ordinary	5789
750	Life	389
625	Junior	1000
2040	Sponsors	625
1125	Gold	3800
600	Silver	1575
23666	Bronze	600
9333	Trade	30628
12250	New Zealand Waterfowl and Wetlands Trust	
26159		
17764		
65506		83488
50	DONATIONS AND FUNDRAISING Annual General Meeting	7357
-	Chapter Receipts	34117
2325	Royal Swan	37314
-	Pateke	4700
-	Wetlands	
-	Sundry	
2375		9520
480	CONSERVATION DONATIONS Branta	1000
2255	Gretel	3030
4154	Pateke	2244
13728	Royal Swan	2216
6	Wetlands	1030
3668	Whio	
2655		9611
26946		
118493	TOTAL REVENUES RECEIVED	\$133247

These Accounts must be read subject to the Accountants' Statement which appears in the Notes to the Accounts.

DUCKS UNLIMITED (N.Z.) INCORPORATED
SCHEDULE OF CASH EXPENDITURE
FOR THE YEAR ENDED 31 MARCH 1994

STATEMENT NO. 4

LAST YEAR		
-	Administration Expenses: Accountancy Fees	2540
5177	Advertising and Publicity	580
235	Audit Fees	700
1264	Bank Fees	1357
16051	Flight Production	15997
7	General Expenses	76
1646	Interest Payable	3692
-	Legal Expenses	39
38480	Management Contract	35628
1996	Printing and Stationery	2358
3263	Tolls and Postage	3305
8709	Travel and Board Meetings	2496
220	Subscriptions INWB	200
-	Valuation Fees	1503
77048		70471
-	Membership Servicing Expenses: Competition Prizes	119
-	Life Membership Badges	2143
130	Printing and Stationery	760
605	Tolls and Postage	385
735		3407
18	Project Expenses: Gretel	1120
2648	Pateke	2625
446	Royal Swan	1687
6222	Wetlands	2067
112	Whio	396
115	Pearce Wetlands	183
9556	General Expenses	3634
1064	Interest Payable	1079
500	Rates	4896
16681	Study Grants	500
-		13291
-	Other Expenditure: Conference Fees	919
14	Corporate Sponsorship Expenses	152
2207	Freight and Duty	1782
941	International Visitors	-
-	Repairs and Maintenance	66
-	Storage	224
127	Veterinary Services	-
3289		3143
97753	TOTAL CASH EXPENDITURE FOR YEAR	\$ 90312

These Accounts must be read subject to the Accountants' Statement which appears in the Notes to the Accounts.

ANNUAL ACCOUNTS

DUCKS UNLIMITED (N.Z.) INCORPORATED
SINCLAIR WETLANDS PROJECT ACCOUNT
FOR THE YEAR ENDED 31 MARCH 1994

STATEMENT NO. 5

LAST YEAR		
6147	INCOME Donations	1039
3276	Grazing Income	6427
101	Interest Received National Bank of New Zealand Ltd	589
9524		8055
853	LESS: Expenditure Accountancy Fees	3128
95	Advertising	1232
4	Bank Fees	-
1722	Bird Food	544
203	Electricity	168
115	General Expenses	13
1227	Insurance	1080
651	Interest Payable	-
5000	Westpac Banking Corporation Manager's Allowance	7463
645	H & Sinclair	800
34	Rates	
-	Repairs and Maintenance	
412	Buildings	652
-	Fencing and Yards	66
805	Plant and Equipment	46
1925	Tracks and Paths	283
71	Telephone and Tolls	1047
107	Travelling Expenses	693
232	Vehicle Expenses	1897
14101	Veterinary Expenses	563
7204	Weed and Pest Control	282
21305		18910
11781	Depreciation Statement No. 7	6548
	TOTAL EXPENSES	25458
	NET DEFICIT FOR YEAR	\$17403

These Accounts must be read subject to the Accountants' Statement which appears in the Notes to the Accounts.

DUCKS UNLIMITED (N.Z.) INCORPORATED
SALES TRADING ACCOUNT
FOR THE YEAR ENDED 31 MARCH 1994

STATEMENT NO. 6

LAST YEAR		
1635	SALES Art Prints	1698
3976	Sundry	4184
5611		5882
7814	LESS: Cost of Sales Opening Stock	9905
5047	Purchases	3050
12861	Goods available for Sale	12955
9905	LESS: Closing Stock	9369
2956	COST OF GOODS SOLD	3586
2655	GROSS PROFIT FOR YEAR	\$ 2296

These Accounts must be read subject to the Accountants' Statement which appears in the Notes to the Accounts.

ANNUAL ACCOUNTS

STATEMENT NO. 7

FURTHER EXPENDITURE DURING YEAR	SOLD DURING	DEPRECIATION FOR YEAR	BOOK VALUE AS AT 31 MARCH 1994
-	-	-	90000
-	-	4670	200854
1000	-	1419	3944
-	-	459	868
<u>11936</u>	<u>-</u>	<u>-</u>	<u>44706</u>
12936	-	6548	340372
-	-	-	110000
-	1495	(249)	-
-	-	482	1524
<u>\$12936</u>	<u>\$1495</u>	<u>\$6781</u>	<u>\$451896</u>

These Accounts must be read subject to the Accountants' Statement which appears in the Notes to the Accounts.

DUCKS UNLIMITED (N.Z.) INCORPORATED

STATEMENT OF ACCOUNTING POLICIES AND NOTES TO THE FINANCIAL STATEMENTS FOR THE YEAR ENDED 31 MARCH 1994

STATEMENT NO. 8

STATEMENT OF ACCOUNTING POLICIES

GENERAL ACCOUNTING POLICIES

These Financial Statements have been prepared in accordance with the general accounting principles as recommended by the New Zealand Society of Accountants for measurement and reporting of Income and Financial Position.

The attached Financial Statements have been prepared using Accrual Accounting to match expenses with revenue and the Measurement Base adopted is that of Historical Cost.

Reliance is placed on the assumption that the Society is a going concern.

PARTICULAR ACCOUNTING POLICIES

FIXED ASSETS

Fixed Assets are stated at cost less accumulated depreciation. Depreciation is written off on a straight line basis over the estimated economic life of these assets. The estimated economic lives are as follows:-

Buildings	50 years
Equipment and Machinery	5 years
Furniture and Fittings	5 years

STOCK

Stock has been valued at the lower of cost or net realisable value on a FIFO basis.

Stock purchased for operations is expensed when purchased.

GOODS AND SERVICES TAX

These Statements have been prepared on a GST exclusive basis.

SUBSCRIPTIONS

Subscriptions are accounted for on a cash basis as and when received.

ANNUAL ACCOUNTS

DUCKS UNLIMITED (N.Z.) INCORPORATED

STATEMENT OF ACCOUNTING POLICIES AND NOTES TO THE FINANCIAL STATEMENTS FOR THE YEAR ENDED 31 MARCH 1994

STATEMENT NO. 8 (cont'd)

NOTES TO THE FINANCIAL STATEMENTS

3. ACCUMULATED FUNDS

LAST YEAR		
340057	Balance as at 1 April 1993	348365
8308	PLUS: Excess of Income over Expenditure for year	25299
	1989 Operation Wetlands Donation now available for General Purposes	15000
	Queen Elizabeth II National Trust Grant for Water Level Development at the Sinclair Wetlands	3200
		43499
		391864
348365	LESS: Transfer by way of specific donation to the Life Membership Capital Reserve Fund of the NEWWT	5000
		\$386864
348365	BALANCE AS AT 31 MARCH 1994	

DUCKS UNLIMITED (N.Z.) INCORPORATED

STATEMENT OF ACCOUNTING POLICIES AND NOTES TO THE FINANCIAL STATEMENTS FOR THE YEAR ENDED 31 MARCH 1994

STATEMENT NO. 8 (cont'd)

NOTES TO THE FINANCIAL STATEMENTS

1. TERM LIABILITIES

- (i) **H A Sinclair**
On Demand, Interest Free. Represents the balance due in respect of Settlement on purchase of the Sinclair Wetlands property from Mr H A Sinclair.
- (ii) **N Z Waterfowl and Wetlands Trust**
Advance on Demand @ 10% p.a. represents the sum of the advances made to Ducks Unlimited from New Zealand Waterfowl & Wetlands Trust as part of external debt retirement programme.
- (iii) **The Rural Bank Limited**
Repaid during the year as part of Ducks Unlimited refinancing.
- (iv) **Duck Bonds**
Advances from members Interest Free. Ducks Unlimited has a commitment to repay 20% of the Bonds each year as drawn by ballot at the Annual General Meeting.
- (v) **Obligation to Utilise 1989 Donation as Part of Operation Wetlands**
This was the balance of a 1989 Donation given for use as part of the Operation Wetlands Project. The Donor has by way of written instruction, requested that the donation now be part of the general funds of Ducks Unlimited.
- (vi) **BNZ Finance Limited**
Credit facility of \$105000 at 8.5% p.a. The facility is for an initial period of two years and is renewable subject to review at least 12 months prior to maturity. It is secured by way of mortgage.

2. PREPAYMENTS

This item is made up as follows:

1994 AGM Registrations Received in Advance	1540
Swamp Conservation Project Non-utilised Funds held at Balance Date	2353
	<u>\$3893</u>

DUCKS UNLIMITED (N.Z.) INCORPORATED

STATEMENT OF FIXED ASSETS AS AT 31 MARCH 1994

	COST	BOOK VALUE AS AT 31 MARCH 1993
Sinclair Wetlands		
Land 318 ha	90000	90000
Educational Centre Buildings	233749	205524
Plant and Equipment	18093	4363
PLUS: Grass Topper	1000	13781
Furniture and Fittings		
Non Building Wetland Development	32770	
PLUS: Fencing	1474	
Pending Development	10462	
	401329	333984
Pearce Wetlands		
Land 125.3 ha	110000	110000
Office Equipment - Fax Machine	1495	1246
Allcraft Punt, Outboard Motor and Equipment	2408	2006
	\$515232	\$447236

NOTES:

(a) Government Valuation of Land only

Sinclair Wetlands Government Valuation at 1 September 1993	\$170000
Pearce Wetlands Government Valuation at 1 July 1992	\$ 75000

(b) The Depreciation for the year on the Assets held at the Sinclair Wetlands has been accounted for in the Sinclair Wetlands Income Account (Statement No. 5).

(c) The Sinclair Wetlands Project was independently valued by Messrs Ernst and Young of Dunedin and their total valuation of land, buildings and improvements amounted to \$400000.

OPERATION WHIO

David Smith Project Supervisor

Due to some unfortunate delays, the 1993 annual meeting of the Blue Duck Captive Breeding Group was not held until August. This meant that planning for the 1993/94 breeding season was not able to be fully implemented and some planned work has had to be carried over to 1994. The 1993 BDCBG meeting was held at Nga Manu Sanctuary at Waikanae and was attended by a large number of Blue Duck breeders.

In spite of this delay, movements of birds were able to be progressed with and a total of 17 pairs were in captivity for the 1993/94 breeding season. In addition to these pairs, a further eight surplus males were being held as part of the programme. A total of 14 breeders now hold Blue Duck.

The breeding season saw a total of four birds raised, however, only one of these is a female. One of the paired males died after breeding so the holdings for the coming breeding season will be 18 breeding pairs and nine surplus males. The post mortem report concerning the dead male was inconclusive as to a cause of death.

The 1994 Blue Duck Captive Breeding Group Meeting was held at the Otorohanga Kiwi House in late May and the focus of the coming breeding season will be to objectively test the effect of a number of factors on the breeding performance of Blue Duck. These include the removal of social stimuli, the effect of a change of aviary and the effect of a change in nutritional plane. It is this latter factor which has had to be carried over from last breeding season.

Since "Operation Whio" began the largest factors affecting productivity of the programme has been the lack of a breeding attempt and egg infertility amongst those pairs who do make a breeding attempt. This latter problem is believed to be somehow related to nutrition and following input from Massey University a structured series of paired nutritional manipulations will be carried out where some birds will be placed on a lower nutritional plane over the winter period followed by a nutritional boost immediately prior to the breeding season. A comparison of the breeding results of the manipulated pairs with the unmanipulated pairs will hopefully allow some better recommendations to be made

concerning the nutritional management of captive Blue Ducks.

The implementation of the studbook for Blue Duck, as reported at last year's meeting, has greatly simplified the management of the whole programme and has assisted the design and implementation of both the transfer and the manipulations which have been proposed. It is a simple, portable, and quickly assessable information base about each and every bird in the programme.

Other matters which have featured as part of Operation Whio over the past twelve months have included Ducks Unlimited's assistance with a feeding experiment being carried out by Dale Towers of Massey University at Staglands in Upper Hutt, and our input into the process of redrafting the Blue Duck recovery plan. In closing this report I would like to thank all the project participants for their help and assistance over the past year and to congratulate Staglands on again breeding the largest number of Blue Ducks last year. We also look forward to the participation of Rainbow Springs as part of Operation Whio.

OPERATION GRETEL

David Rice Project Supervisor

During the 1993/94 year we have continued with our programme of pre-fabrication and distribution of Grey Teal nest boxes. Currently the pre-fabrication work is carried out by the Auckland Chapter and we intend to further advance the distribution and erection of the boxes we have in store during the next year. This will be made easier through the \$1000 Environmental Grant we recently received from the Ministry

for the Environment. This grant has allowed us to purchase a large number of second hand poles from a dismantled kiwifruit orchard and these will be distributed along with the boxes. To date, the cost and availability of poles has been the largest limiting factor for the project.

In addition, local chapters have continued with the yearly maintenance required to ensure maximum utilisation of the boxes which are in the field. Some boxes have now been in place for almost

20 years and a programme of gradual replacement is being considered.

Operation Gretel is one conservation project which allows our members to be actively involved with work in the field which has a direct benefit for waterfowl. It is a relatively inexpensive project which has a lot of benefits for both the Grey Teal population, and our members. It is for this reason that the Ministry for the Environment has chosen to financially support the project and I record our appreciation for their generous grant.

OPERATION ROYAL SWAN

David Johnston Project Supervisor

In the year of the 20th anniversary of Ducks Unlimited New Zealand I thought it appropriate to acquaint our newer members with a brief history of "Operation Royal Swan".

The Mute Swan is the largest species of waterfowl in the world and occurs naturally throughout Europe and the United Kingdom. It was from the Royal collection at Windsor on Thames that the New Zealand birds were introduced during the 1860's and for many years these birds did well in the wild. In 1968, there was a

healthy population at Lake Ellesmere near Christchurch, however, the infamous Wahine storm destroyed much of their feeding habitat and the population went into decline.

In 1986 the then New Zealand Wildlife Service approached Ducks Unlimited to see

if our members could help with the establishment of a captive population of Mute Swans. Around the same time, our patron Lady Isaac and the late Sir Neil Isaac had established a breeding population at their Peacock Springs property in Christchurch and it was from this source that our distribution of swans began.

The two main points of the project have always been the establishment of a broad

based breeding programme of at least 50 pairs of swans followed by the release of progeny back into the wild at suitable approved sites.

The first objective has been accomplished and we now have pairs of swans spread from Kaitaia to Invercargill. Over the past year we have completed the distribution of 24 birds from a variety of members to form new pairs from Puhoi

north of Auckland to Ashburton in the south.

As Project Supervisor my appreciation once again goes to Lady Isaac and her staff at Peacock Springs and to Jim and Raana Campbell for their ongoing help with the project, and to all the project participants for their co-operation.

OPERATION WETLANDS

Ken Cook Project Supervisor

This past year has seen a changing scene in our wetland world and as a result of Ducks Unlimited's improving financial position we have been able to assist with several new wetland projects. This new work has also been helped through the receipt of the first wetland funds from The New Zealand Waterfowl And Wetland Trust's S.W.A.M.P. programme.

In the South Island we have become involved with a wetland project at Te Anau where our input has included both finance and design and construction advice. The first phase of this extensive project was completed during this past summer and we expect further work to be completed later this year. At Matarike, near Motueka, the development of a new wetland through the impoundment of a small creek was also completed with the help of a financial subsidy from Ducks Unlimited.

The ponding work which was completed as part of the Makerua Wetland project in the Manawatu has proved its value during the past breeding season as several broods of ducklings were observed during each visit to the wetland. Following the Manawatu summer drought the Makerua Wetland is currently dry but is expected to gradually reflood during the winter.

The past year has also seen a considerable number of wetlands privately developed by Ducks Unlimited members. Perhaps this indicates an improving economy as widely reported in the media. Additionally, Ducks Unlimited is in the happy position of having committed wetland funds available for the 1994/95 financial year, the first time this has occurred. As a result, a number of projects advanced by the Wellington and Eketahuna Chapters are under consideration, including a wetland rehabilitation at a Petone Golf Club, and a new one hectare wetland at Featherston.

During the past year the Manawatu Chapter has also become involved in the further development of Palmerston North's Centennial Lagoon where a number of waterfowl have been released and signage is planned as part of an enhanced wetland interpretation project for the public. This is not only a local wetland enhancement project, it is also a wetland education project and will further raise Ducks Unlimited's conservation profile in the Manawatu.

In summary, 1993/94 has been a year of significant advancement for "Operation Wetlands" and I am confident that 1994/95 will represent a further improvement in both the number and value of wetland conservation projects to which we are able to contribute. This will be achieved by placing an increasing emphasis of a larger number of smaller projects in partnership with landowners as this allows us to stretch of dollars as far as possible.



THANKS FOR YOUR SUPPORT DURING 1993/94

HONORARY MEMBERS

Keith Barnett, Tokaanu
Horrie Sinclair, MBE, Outram

Bill Wilkinson, Wellington
Adrienne Longuet, Wellington

Ralph Adams, Blenheim
Lady Isaac OSM, Christchurch
Tony Flexman, Pokeno

Laurie Piper, Christchurch
Stephen Loach, Dunedin
Sir Peter Elworthy, Timaru

NEW ZEALAND LIFE MEMBERS

Norman Cameron, Carterton
Ian Pirani, Katikati
Mr J. H. D. Ward, Huntly
Michael Bourke, Kimbolton
Isaac Wildlife Trust, Christchurch
Fred Bailey, Auckland
Norman Marsh, Reporoa
Jim Campbell, Masterton
Cheryl Pirani, Auckland
Michael Hucks, Taupo
Myles White, Dunedin
Andy Gurney, Featherston
Mark Grace, Hunterville

Mrs M. Davison, Wyndham
Glenys Hansen, Eketahuna
Brent McDonald, Outram
Chris Hooson, Wellington
Leigh McKinnon, Katikati
Alan Fielding, Palmerston North
Peter McLeod, Christchurch
Euan Bidwell, Taupo
Andre Terpstra, Murupara
Mrs Dulcie Barnett, Tokaanu
Les Cleveland, Dunedin
Ross Meads, Turangi
Mark Newcomb, Auckland

Kerry Butler, Waipawa
Alastair Nicholson, Wellington
Mr T. G. L. Pearce, Wairarapa
Mr S. B. L. Pearce, Wairarapa
Mr B. M. L. Pearce, Wairarapa
Dave Johnston, Reporoa
Mrs L. Tapp, Northland
Mr M. Tapp, Northland
Colleen Hansen, Eketahuna
Miss O.D. Pearce, Wairarapa
Craig Ewing, Carterton
Mark Pearce, Wairarapa
Marie McEntee, Auckland

Dave Robinson, Rotorua
Equine Nursery, Te Puke
Otamaire Trust, Hunterville
Craig Worth, Hamilton
Ame Nielson, Masterton
Mathew Paku, Masterton
Graham Henry, Wellington
Mr H. Honegger, Otaki
Brent Fotheringham, Wellington
David Mitchell, Christchurch
Dawn Pirani, Katikati
Don McCulloch, Wellington
John Sax, Auckland
Alan Gibbs, Auckland

INTERNATIONAL LIFE MEMBERS

William Barrett, Australia
Tony Reiger, USA
Ken Lowry, Australia
William D. Wright, USA
Mr & Mrs Pat Nolan, USA
Hazard Campbell, USA
Duncan Sinclair, Canada
Mrs Gina Campbell, USA
Herb Moulding, Canada
Paul Roman, USA
Barry Morrison, Canada
Mrs Pat Hall, USA
Mr & Mrs Clark Springer, USA

Richard Trethewey, Canada
Robert Eberhardt, USA
Tom Arvin, USA
Elton Ball, NSW Australia
Mr K. Ball, Papua New Guinea
Mrs K. Ball, Papua New Guinea
John Belz, USA
Beatty Burke, USA
Robert Corrigan Jnr., USA
Bill de Journett, USA
Mr & Mrs William Dean, USA
John Egger, USA
Robert Ehrlich, USA

Eugene Engrav, USA
Basil George, Wales
James Hulbert, USA
Garth Jackson, Canada
Donald Kaatz, USA
Bud Kapilla, USA
Marc Karnes, USA
James Konkel, USA
Omer Long, USA
Jean Luxford, USA
Mr & Mrs Nugent, USA
John Pittenger, USA
Peter Pund, USA
Sis & Ward Reilly, USA

Edwin Roberts Jnr., USA
Robert Strahs, USA
Charles Thomas, USA
John Walker, USA
Ebe Walter, USA
Tom Williams, USA
Stephen Lund, USA
Don & Barb Rollins, USA
Robert Middleton, USA
Duncan Campbell, Canada
Tom Pearman, USA
Gary Harrigan, USA
Al Cromb, Canada
Keri Cromb, Canada

GOLD SPONSORS

Gary Houston, Canada Brendan Coe, Wellington Robert Rainwater, USA A Fowke, Matamata David Smith, Auckland

SILVER SPONSORS

William Moselen, Auckland Mr A Henderson, Pahiatua Andrew Nelson, USA Robert Jary, Nelson N Wong, Balclutha

BRONZE SPONSORS

LD & BF Appleton, Te Aroha
Graeme Berry, Ohakune
Neil & Julie Candy, Palmerston North
Ross Cottle, Masterton
John Doyle, Masterton
DM Banks, Carterton
Trevor Chappell, Hamilton
Allan Elliott, Pahiatua
Graham Gurr, Auckland
Mark Kurylo, Auckland
Steve Luscombe, Rotorua
Canadian Airlines, Auckland
Raana Campbell, Masterton
Jenni Gooch, USA
Carolyn Hooson, Wellington
Guy Lewis, Eketahuna
Diane Mason, Masterton
Kelvin O'Connor, Wanganui
DK Pritchard, Otaki
David Rice, Auckland

Jan & David Stansbury, Opotiki
Stefan Weston, Auckland
Ian Moreland, Auckland
Parkwood Trust, Waikanae
Barbara & Allan Rogers, Opotiki
Warren Stefanski, USA
Paul Matos, Auckland
Kerry Oates, Porirua
Mr & Mrs Reed, Auckland
Sportways Gunshed, Auckland
Mr D Garshaw, Waiuku
Keith Gravatt, Whangarei
Ian Jensen, Otaki
Kiwi & Birdlife Park, Queenstown
Malcolm Lewis, Upper Hutt
Nigel Blair, Taumaranui
RK Dawson, Waharoa
Murray Gibson, Timaru
Michael Keown, Auckland
Mark Kurylo, Auckland

Michael Beddeck, Tuakau
Diana & Fraser Chetwin, Porirua
Geoff Ford, Australia
Ted Hansen, Eketahuna
Kilwell Sports, Rotorua
Grant & Michelle Mackay, Waiuku
AM McIntosh, Matawai
Otorohanga Zoological Society Inc., Otorohanga
Phil Ruge, Waimauku
Stanley Upham, USA
James Mason, Masterton
Dene O'Farrell, Masterton
Diane Pritt, Ohakune
Robert Sowman, Wellington
Russell Watson, Foxton Beach
Nga Manu Trust, Waikanae
GJ & HL Pearson, Carterton
PFH Rowley, Canterbury
Shelley Trotter, Warkworth

EVENT CALENDAR 1994

August 7 - DU National Clay Target Champs, Wairarapa Gun Club, Masterton. Contact - Glenys Hansen (06) 375-8474

September 10 - Eketahuna Chapter Dinner, Majestic Theatre, Ngaumatawa Road, Masterton. Contact - Raana Campbell (06) 372-5869

October 30 - DU National Sporting Clay Champs, Eketahuna Gun Club. Contact - Glenys Hansen (06) 375-8474

FOR SALE

Boxes for nesting Mallard ducks, \$30. Nesting boxes for Grey Teal, with smaller entry, \$30. Free delivery with Auckland area. Other areas add p&p N.I. \$7, S.I. \$12. Write with money order please, to: Chineka, R.D.2, Pukekohe.

DUCKS UNLIMITED

NATIONAL CLAY TARGET SHOOT

Sunday August 7th, start 10.00am, Wairarapa Gun Club grounds, Norfolk Road, Masterton

Trophies, Sash and medals will be awarded.

SWEEPS

Lunch and bar on-site. Continuous morning and afternoon teas.

Accommodation can be arranged.

Further details from shoot secretary

**Glenys Hansen
Phone (06) 375-8474 a/h.**

PROGRAMME

25 skeet - 20 single barrel -
10 pair double rise -
20 single rise - 20 sparrow -
Optional ball trap

DUCKS UNLIMITED

NATIONAL SPORTING CLAY CHAMPIONSHIPS

**SUNDAY
OCTOBER 30**

EKETAHUNA GUN CLUB
GROUNDS

START TIME 10AM

**Sash and Medals
will be awarded**

SWEEPS

100 targets -
2 rounds of 50

Fish and Game
Council Sos

Savage Memorial
Team shoot

Enquiries:

**Glenys Hansen
06-3758474 a/h**

Rongopai Wines

*Like ducks to water you'll enjoy
Rongopai wine at the
20th Annual Conference dinner*

Rongopai Wines are pleased to support
Ducks Unlimited New Zealand Inc in its efforts to restore
and enhance New Zealand's wetlands and waterfowl.

*Like fine wine, this does not happen overnight!
Keep up the good work*



A. READERS DIGEST COMPLETE BOOK OF AUSTRALASIAN BIRDS
A superb book, full of colour photographs covering the spectrum of Australasian birdlife.
Price \$85.00.

B. PONDS & LAKES FOR WATERFOWL
Published by the Game Conservancy, this book covers the creation, improvement and development of waterfowl habitat. Many interesting snippets.
Price \$54.00.

C. WETLANDS - DISCOVERING NZ'S SHY PLACES. GORDON STEPHENSON
A lovely little book, in which the author, a former QEII National Trust Regional Representative, visits wetlands of varying types throughout New Zealand.
Price \$15.00.

D. KEY TO THE WILDFOWL OF THE WORLD
Easy to use bird identification field guide.
Price \$14.50.

E. ERIC HOSKING'S WILDFOWL
Previously reviewed in 'Flight.' A must for junior members. Full of magnificent photographs by one of the worlds for most wildlife photographers.
Price \$50.00.

F. DUCKSHOOTERS - SPORTSMEN & CONSERVATIONISTS
An interesting book written and published by the author, a portion of whose sales profits are generously donated to DU.
Price \$20.00.

G. THE HAWAIIAN GOOSE
A comprehensive commentary of the captive breeding program that saved the goose of the Hawaiian Islands.
Price \$25.50.

H. DU DECAL
Permanent exterior. Our colourful DUNZ logo - suitable for cars, boat, bags, anywhere. Show you belong with pride.
\$1.00

I. BAIT STATION
Waterproof heavy duty plastic tunnel. Includes two Talon based baits. Ideal for around your captive pond or aviary.
\$25.00

J. ROLL BAG
Blue only. Waterproof nylon outer with synthetic zip.
Price \$21.00.

K. CAMO BACKPACK
Waterproof nylon outer with heavy duty synthetic zip. Outer zip up pocket. Ideal for school children or day trekkers.
Price \$36.00.

L. DUCKS UNLIMITED MONOGRAMMED CLOTH PATCH
Available in navy and white.
Price \$10.00.

M. MAXI PENS
(Box of 10) \$13.00 or single \$1.50.
Available in blue and red.

N. FENN TRAP MK 6
Deadly on ferrets, stoats, weasels, rats. All metal construction. The ultimate quick kill tunnel trap.
Price \$36.00.



NATIONAL SALES ITEMS



JOIN DUCKS UNLIMITED NEW ZEALAND INC. AND ENJOY THE BENEFITS

DUCKS UNLIMITED NEW ZEALAND is an independent charitable conservation organisation which was formed in 1974

DUCKS UNLIMITED NEW ZEALAND preserves, creates and enhances wetland habitat through New Zealand

DUCKS UNLIMITED NEW ZEALAND co-ordinates breeding programmes for New Zealand's threatened waterfowl species

DUCKS UNLIMITED NEW ZEALAND advocates the conservation of wetlands as a valuable renewable natural resource

Membership Categories	
Junior (under 16)	\$10
Contributor	\$30
Trade	\$45
Bronze Sponsor	\$60
Silver Sponsor	\$125
Gold Sponsor	\$250
Life (one payment)	\$1,000

ORDER FORM

	Qty
Readers Digest Complete Book Of Australasian Birds	<input type="checkbox"/>
Pond & Lakes For Waterfowl	<input type="checkbox"/>
Wetlands - Discovering NZ's Shy Places	<input type="checkbox"/>
Key To The Wildfowl of the World	<input type="checkbox"/>
Eric Hosking's Wildfowl	<input type="checkbox"/>
Duckshooters - Sportsmen & Conservationists	<input type="checkbox"/>
The Hawaiian Goose	<input type="checkbox"/>
New Zealand Birds	<input type="checkbox"/>
NZ Wetlands: A Management Guide	<input type="checkbox"/>
DU Hat Fluoro/Black (one size fits all)	<input type="checkbox"/>
DU polo Shirt - White only	<input type="checkbox"/>
Ties: Navy/Green, Green/Claret, Navy/Red 100% silk	<input type="checkbox"/>
Sterling Silver Duckhead Pendant	<input type="checkbox"/>
DU Canada 50th Anniversary Badge	<input type="checkbox"/>
DU Logo Badge	<input type="checkbox"/>
Large Gold DU Duck Head Badge	<input type="checkbox"/>
Small Gold (White/Green) Badge	<input type="checkbox"/>
DU Duck Head Stick Pin	<input type="checkbox"/>
DU Decal	<input type="checkbox"/>
Bait Station	<input type="checkbox"/>
Fenn Trap Mk 6	<input type="checkbox"/>
Roll Bag	<input type="checkbox"/>
Camo Backpack	<input type="checkbox"/>
DU Monogrammed Cloth Patch	<input type="checkbox"/>
Maxi Pens - Box of 10	<input type="checkbox"/>
Maxi Pens - Single	<input type="checkbox"/>
DU Cam-O-Paint	<input type="checkbox"/>
Print - Mallards - Janet Marshall	<input type="checkbox"/>
Print - Shovelers - Russell Jackson	<input type="checkbox"/>
Print - "Whio" - Paul Martinson	<input type="checkbox"/>
Print - Grey Teal - Lex Hedley	<input type="checkbox"/>
Print - "Pateke" - Pauline Morse	<input type="checkbox"/>
Membership category	<input type="checkbox"/>
Duck Bond	<input type="checkbox"/>

Total Price \$ _____

I ENCLOSE MY CHEQUE FOR \$ _____ IN PAYMENT OR PLEASE CHARGE TO MY - VISA/BANKCARD (Delete to suit)

CARD NUMBER _____ EXPIRY DATE _____ / _____

NAME (Please print) _____

ADDRESS _____

PHONE _____

SIGNATURE _____

POST TO DIANE PRITT, SMITHS ROAD
OHAKUNE 0-6-385 8016

BUSINESS HOUSE: TAX INVOICE REQUIRED (Tick)