



**"FLIGHT"**

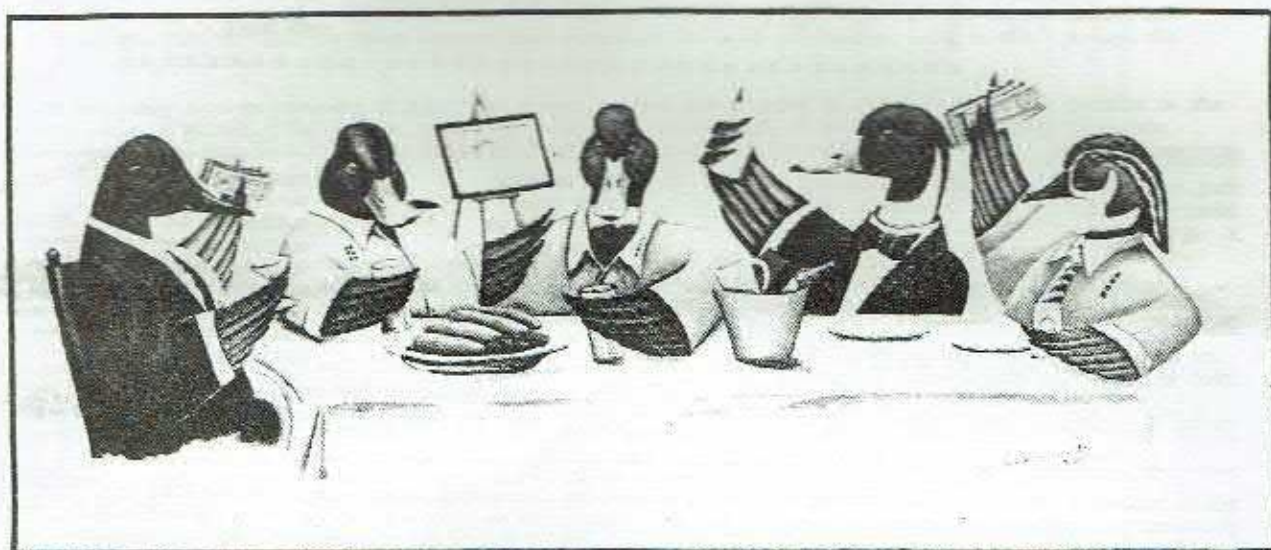
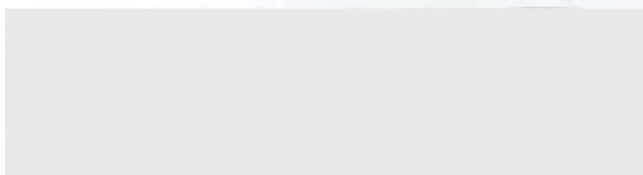
NEW ZEALAND REGISTERED MAGAZINE

DUCKS UNLIMITED (N. Z.) INCORPORATED  
P. O. Box 74, Hamilton, New Zealand

POSTAGE PAID  
Auckland, N.Z.  
Permit No. 3118

Registered at Post Office Headquarters,  
Wellington, as a magazine

FLIGHT 2/82 ISSUE 32 JUNE 1982



WELCOME TO TOKAANU  
ALL DUCKS UNLIMITED MEMBERS AND FRIENDS ARE WELCOME AND ENCOURAGED TO PARTICIPATE  
IN DU'S EIGHTH ANNUAL CONFERENCE AND AUCTION - SATURDAY 10 JULY 1982 - THC TOKAANU


## WILDLIFE RESEARCH LIAISON GROUP - CONTD

Operation Whio is a relatively new DU project which involves the captive propagation of the Blue Duck - it will follow a similar programme to that drawn up for the Brown Teal. "Whio" is very much in its infancy but already DU members have shown that given the right captive environment, Blue Ducks will readily adapt and breed. The future of the Blue Duck possibly causes Ducks Unlimited more concern than does the future of any other species and we believe its population is declining at a rapid rate. We therefore believe that urgent consideration should be given towards instituting a research project which will determine the population size of the species.

In addition to our thoughts on research for our three main projects, we also believe that research should be undertaken to determine the population sizes, population dynamics and habitat requirements for the N.Z. Scaup and the N.Z. Shoveller.


Ducks Unlimited believes too that all wildlife research should be practically orientated and designed to assist the welfare of the species. We are very much against any wildlife research project which is of a purely academic nature; e.g. much of the research undertaken by universities, for example, has little practical value.

Ducks Unlimited wishes the Research Liaison Group success with its investigations and activities."



THE FISH AND FOWL SERIES No. 1

*the*  
**duckshooter's**  
*bag*



*murray williams*

## DUCKSHOOTERS & FISHERMEN

INTRODUCING

The First Of The  
**FISH AND FOWL SERIES**


ANNUAL INFORMATION BOOKS ABOUT WETLAND AND UPLAND GAMEBIRDS  
AND FRESHWATER SPORTING FISH WRITTEN ESPECIALLY  
FOR NEW ZEALAND SPORTSMEN

The  
**DUCKSHOOTER'S  
BAG**

- Black Swan
- Canada Goose
- Paradise Shelduck
- Grey Duck
- Mallard
- Shoveler
- Pukeko

is an authoritative, well  
illustrated and easily  
enjoyed book about -

- Managing our waterfowl
- Game season regulations
- Wetlands



PLEASE SEND ME.....COPIES OF
**POST TO**

**"the Duckshooter's Bag"**

AT \$7 PER COPY

NAME..... DUCKS UNLIMITED

ADDRESS..... (NZ) INCORPORATED

..... P.O. BOX 74

..... HAMILTON

I ENCLOSE \$.....

FISH AND FOWL SERIES No. 1

\$ 7



**"FLIGHT"**

```

*****
**          NO 2/82          ISSUE 32          JUNE 1982          **
**          IN THIS ISSUE:                                     **
**          * DETAILS ANNUAL CONFERENCE: 10 JULY - TOKAANU    **
**          * PRESIDENT'S ANNUAL REPORT                       **
**          * PROJECT REPORTS, NEWS ETC.                     **
**          * HAMILTON FUNDRAISING CHAPTER TOPS 100 MARK      **
**          * PHOTOGRAPHS - AUCKLAND ISLAND TEAL             **
**          AND MORE....                                       **
*****
    
```

THE COVER:  
DON'T MISS THE  
ANNUAL AUCTION !

NATIONAL OFFICERS

PAUL P.B. PIRANI      President, Auckland  
DUDLEY G. BELL      Vice President, Hamilton  
P. NEIL HAYES      Director & Secretary,  
Wellington

OFFICIALS

LYNN BELL      Treasurer, Hamilton  
JUNE BRONGER      Membership Secretary,  
Tauranga  
CHERYL L. PIRANI      Editor, "Flight", Auckland

BOARD OF DIRECTORS

SIG BRONGER      Tauranga  
JOHN GILL      Wellington  
\* GAREY GIRVAN      Wellington  
\* ALLAN ELLIOTT      Pehiatua  
\* JIM CAMPBELL      Masterton  
DAVID McNEIL      Matamata  
+ IAN H. PIRANI      Rotorua  
DIANE PRITT      Ohakune  
\* MARK NEWCOMB      Auckland

(note: + Immediate Past President  
\* Elected, members' representatives)

Ducks Unlimited (N.Z.) Incorporated is a private, non-profit membership organisation dedicated to the preservation, restoration and maintenance of wetlands habitat in New Zealand and to the propagation of the country's rare and prolific waterfowl as a valuable natural resource. The organisation was founded in May 1974 by a group of far-sighted conservationists and incorporated by them in June 1975 at Wellington, New Zealand. The national headquarters mailing address is P.O. Box 74, Hamilton and the registered physical address is 84 Houchens Road, Hamilton. "Flight" is the official quarterly publication of Ducks Unlimited (N.Z.) Incorporated reaching 800 devoted members and friends concerned with waterfowl conservation. DU membership begins at \$ 3 p.a. for Junior to \$ 12.50 for Full membership, with provision for Trade and Life members. Membership of Ducks Unlimited carries with it subscription to this publication. To assure prompt delivery, members who move are urged to forward their new address along with current membership details to national headquarters. Letters and contributed manuscripts and photographs should be addressed to the "Flight" Editor. Views expressed by contributors are their own and do not necessarily constitute those of Ducks Unlimited (N.Z.) Incorporated.

Produced by: Cheryl L. Pirani, "Branta", Kahikatea Flat Road, R.D. 2 Albany  
Printer: Panicprint, 3 Lorne Street, Auckland  
Photography: Dr Murray Williams, F.N. Hayes  
Graphics: courtesy Ducks Unlimited Inc U.S.A., World Wildlife Fund N.Z.  
Neville Newcomb Ltd



Ducks Unlimited membership badges, sized 5/8" diameter, featuring the corporate symbol in gold/white/blue are available from DU Headquarters P.O. Box 74, Hamilton. Price: \$ 5 each

## DU News

### GENEROUS DONATION FROM BILL BARRETT

In April, Ducks Unlimited was very pleased to receive a fine gift from member Bill Barrett of Australia. This was a \$200 Bosch jigsawing machine which will be used to cut out the entrance hole in Operation "Gretel" nest boxes. Thanks, Bill for your positive encouragement and support.

### BREEDER OF THE YEAR AWARD: OPERATION PATEKE

"Pateke" supervisor, John Gill, with 17 Brown Teal reared for 1981/82 will receive the "Breeder of the Year" award at the annual conference in Tokaanu. The award will take the form of a certificate and cheque for \$ 50. Congratulations John on setting a grand example to other would-be award recipients.

### HAMILTON CHAPTER'S MEMBERSHIP DRIVE

As well as organising another outstanding Hootnanny, the Hamilton fundraising chapter has been very active in boosting DU membership (witnessed by the large list of new members appearing in this and recent issues of FLIGHT). There are now over 100 members of the chapter, illustrating what can be achieved with dedication and enthusiasm. Well done Hamilton - and we hope to see *all* of you at the annual conference! Richard Hannibal and Lindsay Lyons between them signed up the most new members - 28 in all - before the target date, 31 March.

The Hootnanny held on Saturday 17 April was a huge success and enjoyed by all participants - details in the next issue of FLIGHT. The chapter also held a duck hunters evening on Wednesday 7 April and 62 people attended - John Cheyne did all the "spade work" and our thanks to him for his efforts.

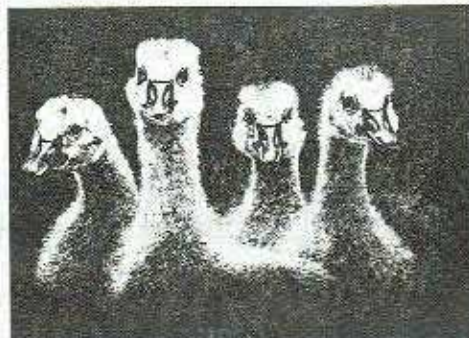
### NOTE FROM THE EDITOR

*"Having produced and distributed 32 issues of FLIGHT, I have decided that this one will be my last - for personal reasons but also because the time is appropriate for others to have an opportunity and for the introduction of new ideas for format and style. Since the first issue, the image of your newsletter has changed and, I hope, improved and I am confident that future production is in capable skilled hands.*

*Over the past eight years Neil Hayes has provided most valuable support with brilliant photography and written material - he will continue in this role. Special thanks too to Ducks Unlimited Inc U.S.A. for the use of their beautiful, descriptive graphics and permission to reproduce articles - all of which have enhanced the image of FLIGHT. Robin Lock of Panicprint who has printed FLIGHT since 1975 has been a source of knowledge, inspiration and encouragement and is responsible for the quality appearance. Without contributions from members and friends, there would be little to report - so my thanks to all who have supplied articles and photographs.*

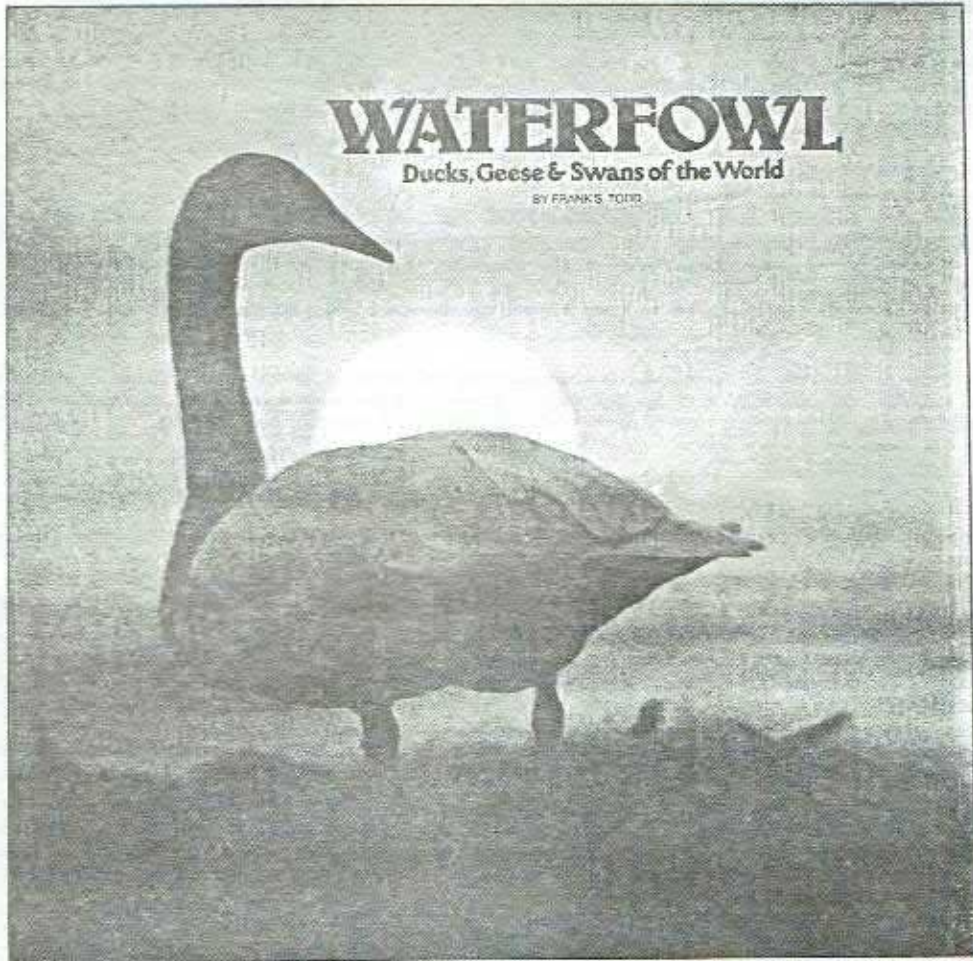
*Finally, no vote of thanks can be made without mentioning my long-suffering husband, Paul - for the disruption to family lifestyle caused by our participation during many weekends and evenings planning content, layout, typing and then the preparation for posting. FLIGHT is truly a reflection of team effort. I am looking forward with keen anticipation to receiving the 33rd and subsequent issues!"*

Cheryl Pirani



Sketchbook of Jay Lee D. Smith

DUCKS UNLIMITED SALE OFFER



FRANK TODD'S MAGNIFICENT BOOK, "WATERFOWL - DUCKS, GEESE & SWANS OF THE WORLD" IS BACK IN STOCK. PRICE IS \$ 49.50 PER COPY.

ORDER FROM DU HEADQUARTERS, P.O. BOX 74 HAMILTON.

COPIES WILL BE ON SALE AT THE ANNUAL CONFERENCE, TOKAANU - 10 JULY!

\*\*\*\*\*

# DU News

A WARM WELCOME IS EXTENDED TO THE FOLLOWING NEW MEMBERS AND THANK YOU FOR YOUR SUPPORT

Abernethy, Campbell	J	Coombe, Philip	S	Patel, Miss B.	S
Adams, John	S	Coombe, Wayne	J	Pauatahanui School	S
Barclay, Mel	S	Finneaty, R.N.	S	Philips, Eric G.	F
Barclay, Gail	S	Fowke, A.L.	S	Roberts, K.H.	F
Bell, Betty G.	F	Grant, Ken	S	Seagar K.L.	S
Black, J.R.	S	Hansen, Edward G.	F	Saunders W.	S
Brown H.E. Ambassador	F	Harrington T.C.	S	Shaw, Ray	F
	Monroe (USA)	Haywood, Richard	S	Shearer, Dr Ian	F
Burnell, John B.	F	Hare, Brian	S	Seddon, John	S
Challands, Neil	F	Hunt, R.D.	S	Townsend H.	S
Campbell, Malcolm	S	King, Shirley	J	Walsh, Nicholas	F
Card R.H.	F	Lyons, Lindsay	S	Walsh, Alf	F
Carter, Mark	S	McQuade, John	S	Ward, Ms Rose	S
Connolly, Shane	J	Morris, David	J	Williamsen, David	S
Connolly, Jenni	S	Morrison, David	S	Wilson, A.R.	T
Counsell, Bill	S	Nicol, Russ C.	S	Wright, Paul	S
Coombe, Gary	S	Otway, E.N.	F	Zak, Miss B.	S

DU THANKS THE FOLLOWING MEMBERS WHO MADE DONATIONS WITH THEIR SUBSCRIPTIONS RECENTLY

Atkins F.J.  
Bailey F.S.S.  
Bailey, J.S.  
Boscawen, John  
Baigent, Kent  
Barnett, K.L.  
Bank of New South Wales,  
Waitara  
Croad, G.R.  
Chipchase, R.M.  
Davison, Ian  
Duncan, W.R.  
Fotheringham, B.

Frost, R.C. Jnr  
Garrick, David  
Garrick, Professor J.A.F.  
Graham, C.E.  
Grace Mrs C.R.S.  
Johnson M.M.  
Kati Kati Bird Gardens  
Lawson P.J.  
Meads R.  
Martin, Richard C.M.  
Morrison W.A.  
McArthur R.A.  
Midgley, M.D.

Nicol, Ross  
Newcomb, M.  
Perry B.  
Quin, Dr Paul  
Rod & Rifle Magazine  
Stacy, D.M.  
Sim, D.M.  
Strang, D.D.  
Sowman, R.J.  
Smith D.G.  
Tyson, T.G.  
Wagner H.E.  
Wedding L.J.



WEAR A DU SPORTSMAN'S CAP!



The Hamilton fundraising chapter of DU has produced a sportsman cap every DU member will want to wear! Sturdily constructed from cotton in three colourways, this cap is useful for all year round wear. The crown is brown, sides are tan with the words "Ducks Unlimited", flanked by leaping mallards, and the "visor" brim is olive green. DU caps are \$ 4 each and available from:

Mrs Gail Barclay, DU Chapter Secretary  
37 Fairview Street, Hamilton.

One size fits all - made in New Zealand.

# YOURS FOR THE BIDDING



\*\*\*\*\*  
\* THESE DESIGNER T-SHIRTS ARE AMONG THE AUCTION ITEMS FOR THE \*  
\* ANNUAL CONFERENCE ON 10 JULY. CONSTRUCTED OF 100% HEAVYWEIGHT \*  
\* PRE-SHRUNK COTTON, THESE T-SHIRTS ARE HANDSOMELY STYLED (LONG \*  
\* AND SHORT SLEEVES). 4 ONLY! \*  
\* \*\*\*\*\*

DUCKS UNLIMITED (NZ) INC - ANNUAL CONFERENCE 1982

The Eighth Annual Conference of Ducks Unlimited (NZ) Incorporated  
will be held at TWC Tokaanu, Tokaanu  
on Saturday 10 July 1982 at 2.00 pm.

BUSINESS

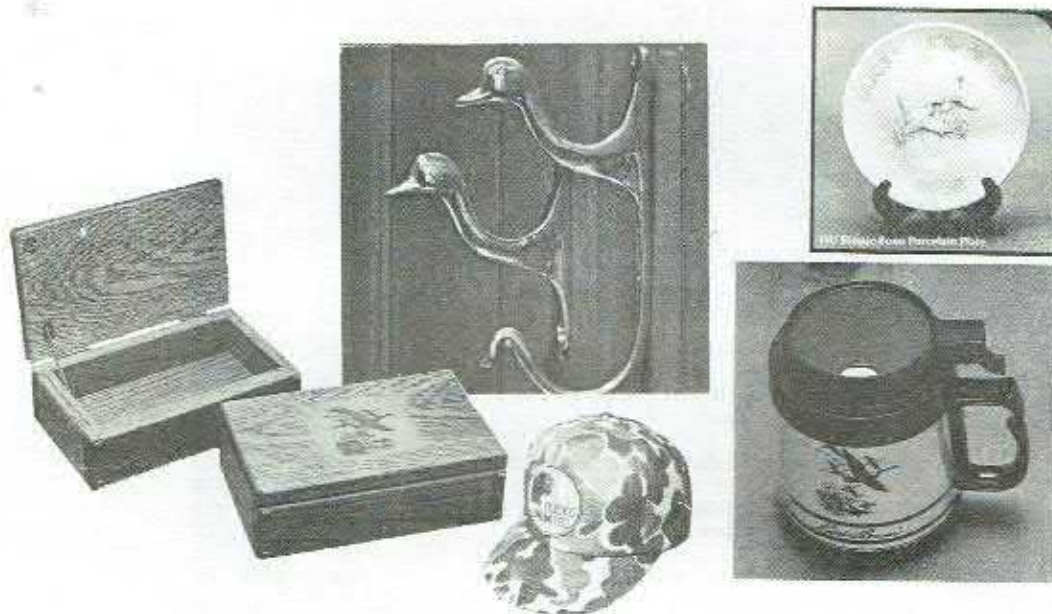
1. 1.30 pm Registration
2. 2.00 pm Welcome and apologies
3. 2.05 pm Minutes of 1981 annual conference and matters arising
4. 2.15 pm President's report and presentation of annual financial statement
5. 2.25 pm Appointment of Auditors for 1982/83
6. 2.30 pm Election of four (4) Directors from the floor to represent members
7. 2.40 pm Report on Operation "Pateke" (F.N. Hayes)
8. 2.50 pm "Breeder of the Year Award" - Operation "Pateke" (President)
9. 3.00 pm Guest speaker: Dr Murray J. Williams, Wildlife Service will address the meeting on his recent research with Auckland Island Teal
10. 3.45 pm Break for refreshment (President's "shout")
11. 4.00 pm Guest speaker: Mr W. Bryce Johnson, Director of New Zealand Acclimatisation Societies, will discuss current activities in the Society movement
12. 4.30 pm Guest speaker: Sir William Gilbert, President of the World Wildlife Fund-New Zealand will address the meeting concerning WWF activities
13. 4.50 pm Report on Operation "Gretel" (D.G. Bell)
14. 5.00 pm Report on Operation "Whio" (D. McNeil)
15. 5.10 pm Report on Operation "Branta" (F.N. Hayes)
16. 5.20 pm General Business
17. 5.30 pm Refreshments
18. 7.00 pm Annual Dinner
19. 8.00 pm Annual Auction (Auctioneer: Mr K.G.W. (Bill) Wilkinson)
20. 9.00 pm Refreshments

\*\*\*\*\*

A copy of the Rules of Ducks Unlimited (NZ) Incorporated will be available for perusal by any member at the conference. All members and friends of Ducks Unlimited (NZ) Incorporated are invited to attend.

F.N. Hayes  
Secretary  
P.O. Box 74, Hamilton





MEMBERS - PARTICIPATE IN DUCKS UNLIMITED'S MAJOR FUNDRAISING EVENT OF THE YEAR  
YOU CAN MAKE IT A MEMORABLE OCCASION - THE "BENEFICIARIES" ARE N.Z. WATERFOWL!

THC Tokaanu is the venue for the 1982 annual conference and auction. This year we have three interesting guest speakers; highlights from the year's operations will be discussed; the opportunity to get together with fellow members and friends for an excellent cause and some great fun should not be missed. Why not introduce a friend or member of the family to DU at the same time?

Registration: The fee this year remains at \$15 per person and includes a delicious dinner prepared by the THC chef. If you wish to stay in the hotel or nearby at other motels, book soon to avoid disappointment.

Auction items generously donated this year include - from Ducks Unlimited Inc U.S.A. - superb porcelain plates, handsome clock, decanters, wooden cigar box and magnificent art prints, to mention just a few. Items donated locally are live waterfowl, camouflage clothing and sporting equipment, waterfowl brass fittings, miniature wooden/leather chest, "designer" T-shirts, waterfowl and sporting publications, black and white fleeces for spinning, accommodation and meals for 2 for a weekend at any THC hotel, waders... and much more! A leading international wildlife artist, Mr David Hagerbaumer of the United States has donated 2 of his limited edition prints and a book of his paintings "Selected American Game Birds" - Mr Hagerbaumer, who expresses his knowledge of the great outdoors in a most realistic and pleasing manner has a distinctive style which has earned him many honours.

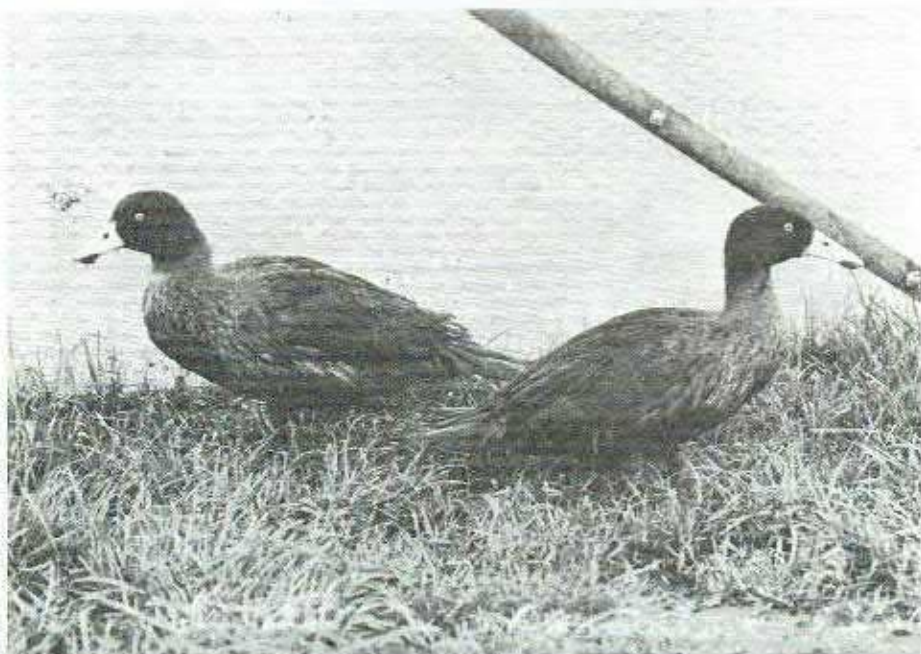
Members will also have an opportunity to purchase DU sale items, publications, gift note cards by Joan Taylor, lapel badges etc. You may if you wish renew your DU subscription at the same time, or enrol new members.

Proceeds from the auction benefit DU waterfowl projects for 1982/83. Use the opportunity to assist with fundraising in a stimulating and happy atmosphere - and take home something as well as a memento of the occasion!

A warm welcome is extended to all members and friends - your directors look forward to meeting with you on Saturday, 10 July - THC Tokaanu.

OPERATION 'WHIO'

As part of Operation "Whio", a mated pair of Blue Ducks was recently transferred from Ducks Unlimited to the Mt Bruce Native Bird Reserve at Masterton. Neil Hayes photographed the birds seconds after they had been placed in their temporary enclosure at Mt Bruce.



OPERATION "PATEKE"

Figures for the 1981/82 Brown Teal brooding season have just been finalised, the closing date for the period being 30 April 1982. While the total is below last season's record figure of 101, it is nevertheless remarkable and the second highest achieved. John Gill and Neil Hayes deserve a special mention for their impressive input into the 1981/82 breeding programme (and its worth mentioning that since the project began these two have reared well over 50 Brown Teal each).

Successful brooders and final figures are as follows:

John Gill	17
Neil Hayes	15
Murray Dench	9
Ian Pirani	7
Bill Clinton-Baker	7
Roy Dench	4
Sig Bronger	3
Ron Denny	3
Jack Worth	3
Barry Rowe	3
David Brenkley	2
Murray Powell	1
Allan Wright	1

We congratulate these members and thank them for their dedication and enthusiasm for this unique conservation project.

In addition to DU's Brown Teal propagation figures, the results at Mt Bruce Native Bird Reserve were excellent - 47 birds were reared. Congratulations to Gideon Anderson and his team.

TOTAL: 75

RELEASE OF BROWN TEAL

With a total of 122 Brown Teal reared between Ducks Unlimited and Mt Bruce, it has been possible to release 118 birds into the wild during the breeding season just ended. DU released 69 birds at Puke Puke Lagoon and Mt Bruce released 49 at Lake Koputara which is just south of Puke Puke. Not surprisingly several Koputara Brown Teal have been sighted at Puke Puke over recent months.

BROWN TEAL TRAPPED AT PUKE PUKE

The band numbers of 31 different Brown Teal were recorded when these birds were caught in the duck traps during annual banding operations at Puke Puke Lagoon. Two of these birds were from a release of 12 DU birds made last August, thus clearly indicating the birds can adapt and survive in the wild. Unfortunately 4 Brown Teal were found dead in the duck traps during banding - no doubt trampled under-foot by mallards. It was disappointing to learn that no unbanded birds were trapped.

BROWN TEAL SHOT AT PUKE PUKE LAGOON

In spite of extensive media coverage concerning Brown Teal in the Manawatu, it is sad to report that six Brown Teal bands were handed in at Puke Puke on the opening weekend of the duck season. While some shooting of Brown Teal can be expected in almost any area where birds are released, six known dead on opening weekend is a far greater number than the population can stand. DU is reviewing its thinking regarding the use of Puke Puke Lagoon as a desirable release site.

MATAKANA ISLAND

As a follow-up to Andy Garrick's habitat investigation and observation work on Matakana Island (reported in the last issue), DU member Brian Chudleigh of Pio Pio has spent considerable time searching for Brown Teal on the island and in the many estuaries along the Tauranga coast. It is sad to report that Brian has not seen a single Brown Teal which, more or less, endorses Andy Garrick's findings. Brian will continue his observations for some time and Ducks Unlimited is grateful for his time and determination.

BROWN TEAL RESEARCH

Since the highly successful Brown Teal Management Seminar in 1980, your group has made submissions to six commercial organisations in an effort to raise funds for research. All have been rejected and rather than continue with further submissions, which take considerable time and effort to prepare, DU has offered the Wildlife Service a minimum of \$ 2,000 per annum towards a research project suggesting it undertakes this work and recommending it should seek further funds from the acclimatisation society movement, the Royal Forest & Bird Protection Society and perhaps other interested organisations. Ducks Unlimited believes research on Brown Teal is long overdue and essential for the species' survival.

AUCKLAND ISLAND TEAL

DR MURRAY WILLIAMS OF THE WILDLIFE SERVICE WILL ADDRESS THE ANNUAL CONFERENCE ON HIS EXPERIENCES IN THE AUCKLAND ISLANDS RECENTLY OBSERVING AND TRACKING (EMPLOYING RADIO TRANSMITTERS) AUCKLAND ISLAND TEAL - DURING HIS VISIT HE CAPTURED THE TEAL ON FILM.



## OBSERVATIONS FROM A "HIDE" - BILL CLINTON BAKER

"The following notes were taken from our observation hide during the past breeding season and may be of interest to members. Almost all activity - courtship, househunting etc takes place during the first two hours of daylight.

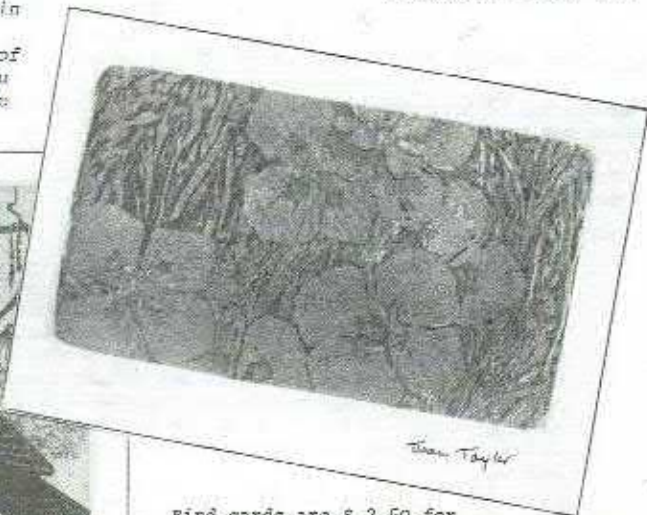
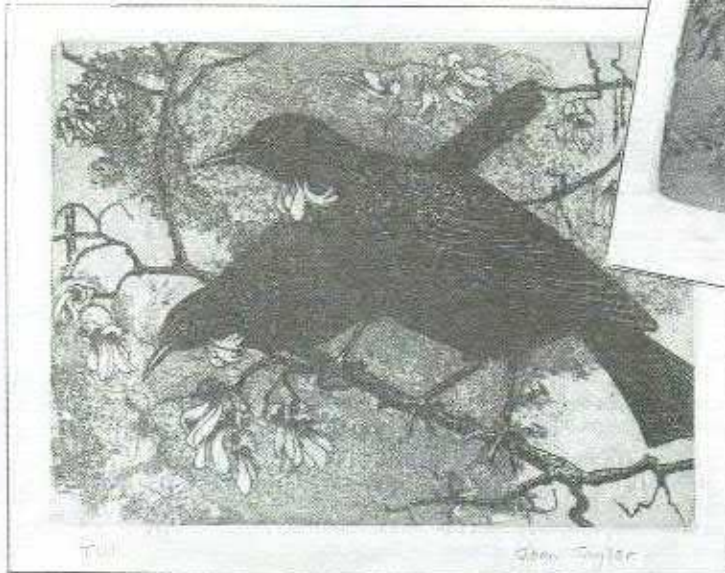
- September 10 Chestnut Teal has started brooding in a DU type nest box  
 19 Teal eggs are all "clear" - was afraid that the pair are not really bonded.  
 21 Pair of wild Grey Teal on dam - very tame. Also a wild female Paradise has arrived and chases our pinioned female
- October 2 Swallow sitting on eggs. They have built under a nest platform built for them over the water. Wild Grey Teal househunting and visiting boxes on island  
 4 Wild female Paradise seems to be pairing with our male and drives female away. Wild Grey Teal have two eggs in box on island. One female Shoveller displaying, though the four birds do not seem to have paired off. Shovellers often seem to dabble the surface, swimming in a tight circle, head to tail. Occasionally males will put their head into the water and go "full speed astern"! Brown Teal sitting. The male has a constant hate of mallard which he attacks - he always wins! He never bothers any other species.  
 6 Our female Pari driven into the dam outlet and I have to rescue her and move her to the lower dam.  
 8 Wild female Paradise mating with our male. Chestnut female displaying with Carolinas. She crouched and was mounted several times by Carolina drake. Duck morals also seem suspect! Must get another Chestnut male for next season; a little competition might help?  
 10 Wild Pari female takes long flights away. Nest hunting? Will she nest away, leaving her pinioned mate on the dam? A starling repulses Carolinas at nest box. Blue herons which are nesting on top of nearby macrocarpas, spend much time at dam catching frogs. Often land on hide a few inches above my head.  
 19 Pair of wild Shovellers arrive and are chased by one of our males. Scaup have started househunting - burrow into long grass at edge of dam. Swallows "dive bombing" Tree Whistlers who are intruding near their nest platform.  
 31 Carolina male appears to be choosing nest box for second clutch - it is usually the female who does this. Young swallows have flown. They sit on a fence in a tight little row and are fed by the parent birds as they hover on the wing. A dabchick has arrived.
- November 8 "Solo" Brown Teal female found sitting on three eggs!
- December 1 Swallows have second clutch. Brown Teal sitting on third clutch.
- January 8 Wild Shoveller appears on dam with six ducklings
- February 14 Swallows have third family in nest. Wild Shoveller still has five of her ducklings and getting quite tame. The single dabchick seems to have taken up permanent residence."



FOR SALE: ENCHANTING GREETING CARD/NOTES

YOU CAN PURCHASE THESE GIFT CARDS AT THE ANNUAL CONFERENCE TOO!

By well known artist, Joan Taylor, these packs contain 6 cards with envelopes, either assorted packs of 6 individual bird or floral studies, or 6 of one type of floral or bird study. Cards are blank inside for you to write your own message. The colour range is subtle and delightful - these notes also make fine gifts.



Bird cards are \$ 2.50 for pack of 6. Floral studies are \$ 2.00 for pack of 6. Orders can be placed direct with

Joan Taylor  
66 Lake Road  
Devonport, Auckland 9

(a percentage of Joan Taylor's earnings from the sale of these delightful cards to DU members will be donated to Ducks Unlimited.)

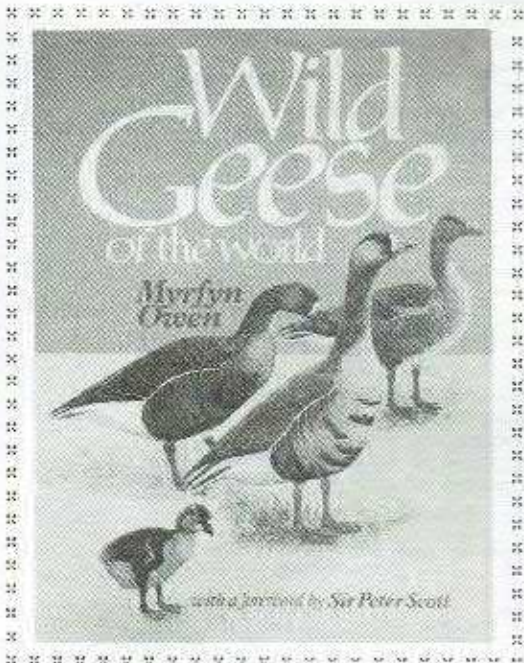
SPECIAL OFFER FOR DU MEMBERS

"WILD GEESE OF THE WORLD"

BY DR. MYRFYN OWEN

SPECIAL OFFER TO DU MEMBERS...  
\$ 51 POST PAID (NZ RETAIL \$ 53)

DU MEMBERS: ACQUIRE THIS VERY SPECIAL BOOK AND HELP BOOST DU FUNDS AT THE SAME TIME. AS WELL AS OFFERING A DISCOUNT TO DU MEMBERS, THE WORLD WILDLIFE-FUND NEW ZEALAND HAS OFFERED TO PAY DU COMMISSION ON THE NET PROFIT FROM ORDERS ATTRACTED FROM THE PROMOTION IN YOUR NEWSLETTER. THESE EARNINGS FROM COMMISSION WILL BE PLACED DIRECTLY IN "THE FIELD" TO BENEFIT NEW ZEALAND WATERFOWL!



ORDER FORM: "WILD GEESE OF THE WORLD"

TO: WORLD WILDLIFE FUND-NEW ZEALAND  
P.O. BOX 12-200, WELLINGTON NORTH

PLEASE POST ME .....COPY/COPIES OF  
"WILD GEESE OF THE WORLD"  
BY DR. MYRFYN OWEN

ENCLOSED IS MY REMITTANCE OF \$ .....(\$51 COPY)

NAME .....

ADDRESS .....

.....



WILDLIFE RESEARCH LIAISON GROUP

Members may be interested in the submission Ducks Unlimited made to the Group, the formation of which was reported in the March issue of FLIGHT. Relevant extracts are reproduced below:

"Thank you for the opportunity to comment on the future needs for wildlife research in New Zealand.

(a) The Aims and Objectives of Ducks Unlimited (NZ)

Ducks Unlimited was established in 1974 by a group of New Zealanders who were concerned that our native and endemic waterfowl were not receiving the attention they deserved - generally the acclimatisation societies are involved with game species only and the Royal Forest & Bird Protection Society is generally involved with only forest birds. So it seemed to us that there was ample scope for an organisation which would promote and develop means by which New Zealand's waterfowl, most of which had been on the decline, could be given a new lease of life. So the main objectives of the organisation are: to preserve and propagate rare and endemic waterfowl, and the preservation and development of associated waterfowl habitat.

(b) Involvement with New Zealand Waterfowl

DU has several important waterfowl projects in operation; the main projects are Operation "Pateke", Operation "Gretel" and Operation "Whio".

Operation Pateke involves the captive propagation of the endangered Brown Teal and the release of progeny in to suitable wild areas. This project is progressing extremely well and since it commenced in 1976 nearly 300 Brown Teal have been reared by DU members. (By world standards this project is unique as we know of no country where individuals are directly involved in attempts to save an endangered species of waterfowl). However, like so many of our waterfowl, little research has been carried out on Brown Teal in the wild and we believe that high priority should be given to instituting a Brown Teal research project - along the lines of the programme enclosed (not reproduced here - Editor). We feel that such research could provide information which might possibly help to ensure the survival of the Brown Teal.

During the last two years Ducks Unlimited has approached six commercial organisations in an attempt to raise funds for Brown Teal research - without success. We have therefore now written to the Director of the Wildlife Service offering a minimum of \$ 2,000 per annum towards a Wildlife Service controlled Brown Teal research project. At the same time we have also suggested to the Director that the Wildlife Service also seek research funds from the Royal Forest & Bird Protection Society and the Acclimatisation Society movement and also, if necessary, the World Wildlife Fund of New Zealand.

Operation Gretel is an attempt to increase the Grey Teal population in New Zealand by providing artificial nest sites for the Teal. The Grey Teal introduced itself around the middle of the last century but the population has not expanded to any great degree because of the lack of suitable nest sites.

To date DU members have erected nearly 600 nest boxes for Grey Teal and in several areas usage of the boxes has been dramatic - with between 5,000 and 6,000 eggs hatching since the project commenced in 1976.

The Wildlife Service commenced a research project on nest box usage in 1979 but the study was terminated after only two seasons. While we appreciated this effort we considered that any research into nest box usage should be carried out over at least five breeding seasons. Such research should take place at several sites and should involve:

- |                                      |  |
|--------------------------------------|--|
| (a) marking sitting birds            | (f) determination of preferred nestbox siting      |
| (b) marking ducklings                | (g) egg production                                 |
| (c) determination of female return   | (h) clutch sizes and success                       |
| (d) determination of duckling return | (i) determination of duckling survival, and        |
| (e) nest box usage                   | (j) determination of size of Grey Teal population. |

(continued on page 20)

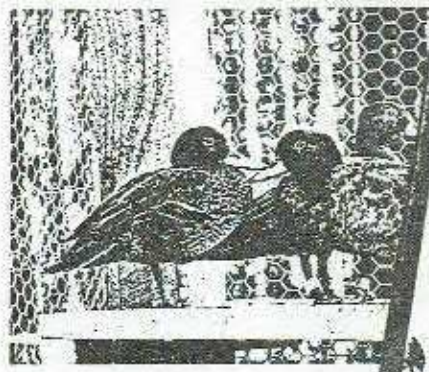
DUCKS UNLIMITED SALES OFFERS

DETAILED BELOW ARE PUBLICATIONS AND OTHER ITEMS AVAILABLE FOR SALE FROM DUCKS UNLIMITED HEADQUARTERS.

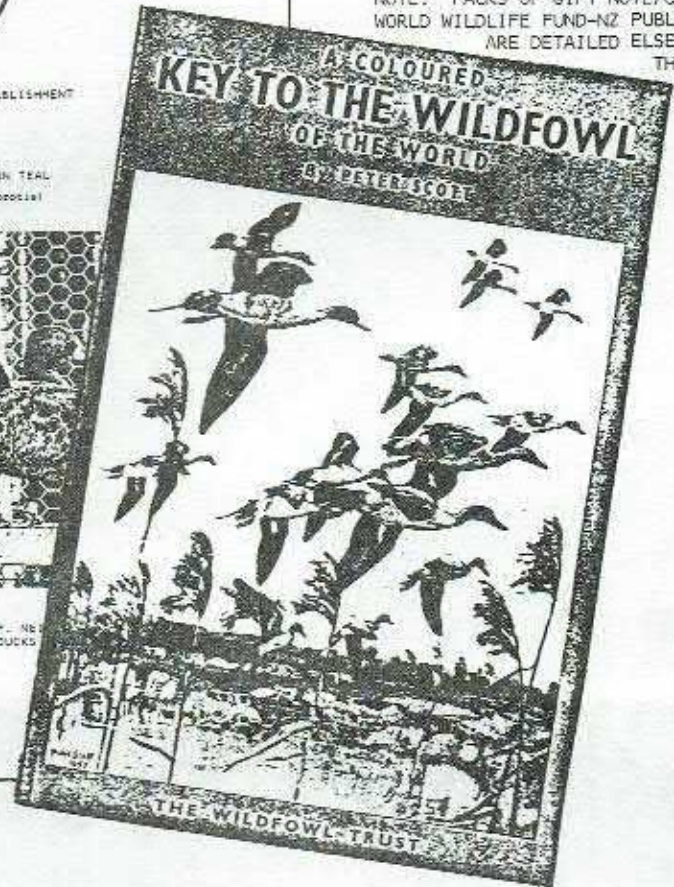
NOTE: PACKS OF GIFT NOTE/CARDS AND WORLD WILDLIFE FUND-NZ PUBLICATIONS ARE DETAILED ELSEWHERE IN THIS ISSUE



THE AVICULTURE, RE-ESTABLISHMENT AND STATUS OF THE NEW ZEALAND BROWN TEAL (Anas ducklingtoni chiroccalis)



BY F. N. HAYES  
DUCKS



DU SALES OFFERS

- THE INCUBATION BOOK BY DR A.F. ANDERSON BROWN \$ 32
- A COLOURED KEY TO THE WATERFOWL OF THE WORLD BY SIR PETER SCOTT \$ 10
- THE AVICULTURE, RE-ESTABLISHMENT AND STATUS OF THE NZ BROWN TEAL BY F.N. HAYES \$ 6
- THE DUCKSHOOTER'S BAG BY DR MURRAY WILLIAMS \$ 7
- DUCKS, PONDS AND PEOPLE BY JOHN SWIFT (NOW BACK IN STOCK!) \$ 7.50
- DUCKS UNLIMITED LAPEL BADGES \$ 5
- GREY TEAL NEST BOX (KITSET) EASY TO ASSEMBLE \$ 10

```

** ** ** ** **
** ORDER FORM: TO DUCKS UNLIMITED (NZ) INCORPORATED, P.O. BOX 74 HAMILTON **
** PLEASE POST ME THE FOLLOWING (ALL PRICES POST PAID) COST EACH **
** THE INCUBATION BOOK . . . . . $ 32 **
** A COLOURED KEY TO THE WATERFOWL OF THE WORLD . . . . . $ 10 **
** THE AVICULTURE, RE-ESTABLISHMENT & STATUS OF NZ BROWN TEAL . . . . . $ 6 **
** THE DUCKSHOOTER'S BAG . . . . . $ 7 **
** DUCKS, PONDS AND PEOPLE . . . . . $ 7.50 **
** DUCKS UNLIMITED LAPEL BADGE(S) . . . . . $ 5 **
** GREY TEAL NEST BOX(ES), KITSET . . . . . $ 10 **
** I ENCLOSE MY CHEQUE FOR $ . . . . . IN PAYMENT **
** NAME (PLEASE PRINT) . . . . . **
** ADDRESS . . . . . **
** ** ** ** **

```